

Welcome to

BRIBIE ISLAND SEASIDE MUSEUM

A Social Guide



We can read this story as we get ready for our trip to Bribie Island Seaside Museum.

In this story we will learn about what we can find inside the museum and about some of the people who work there and can help with our visit.

Bribie Island Seaside Museum celebrates the story of Bribie Island and the people who have lived here. Inside we will find lots of objects and photographs that relate to the history of the area, some of which are very old! There are also movies to watch and lots of places to sit and relax around the museum.

ENTERING THE MUSEUM

Entry is free.

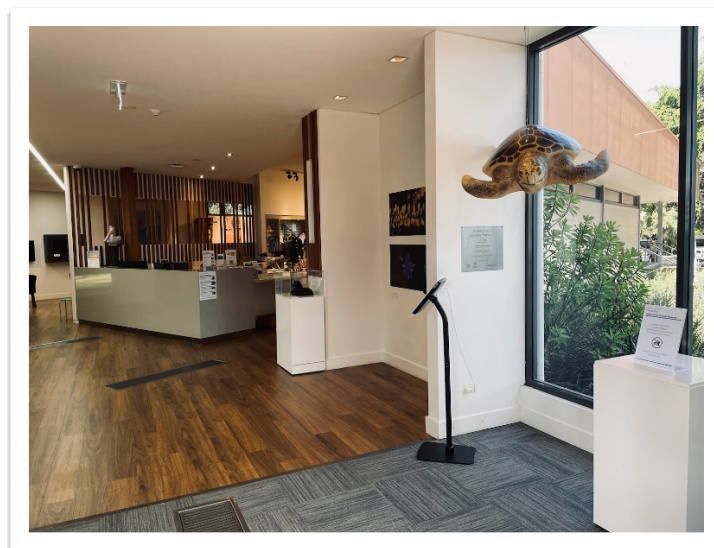
We are welcome bring along anything we need to help us feel more comfortable and relaxed, such as noise reducing headphones, hand fidgets and sunglasses.

At the front of the museum there are stairs and a wheelchair-friendly ramp leading to the automatic sliding door entry.



We don't need to book to visit the museum. Sometimes on busy days (usually Sundays) the museum might fill to capacity, and we might have to wait a little while before we can go in.

When we enter the front doors, we will see some signage requesting that food and drink not be bought into the museum. However, we can bring enclosed water containers or water bottles.



The foyer area may be a little noisy if there are a lot of people. Sometimes there might be an activity table in the foyer, offering crafts or fun things for families to do. There are quieter spaces as we move around the museum.

The museum is not very big, so we don't need a map.

Inside, we will see friendly employees who wear black uniforms with name badges or ID cards on. They will say hello and help with any questions we have.



Low sensory hour is every Thursday, from 2:30 PM to 3:30 PM. During this time, we can enjoy the museum at a less busy time of day with reduced noise and lighting, and a supportive environment.

MOVING AROUND THE MUSEUM

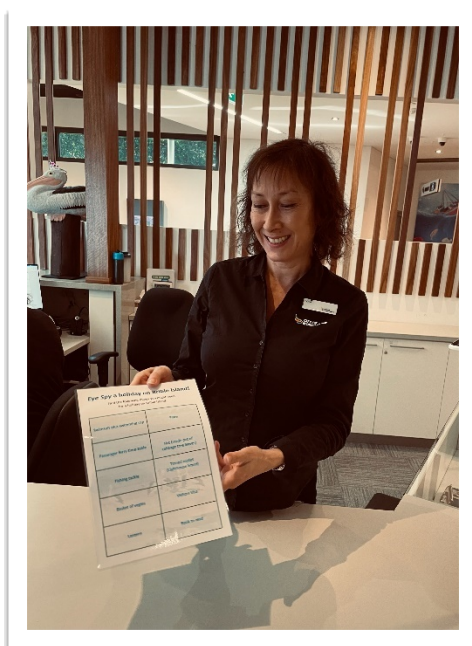
While we move around the museum, we should not touch anything because a lot of objects are very old. We will see some signs like this reminding us not to touch:



The museum is all on one level, the floor is flat and wide. It is easy to walk on or use a wheelchair on. We will walk through the museum, not run, so that we don't hurt ourselves or anyone else.

The staff will usually recommend we start our journey around the museum by turning left when we enter. This is because the museum is set out thematically and it starts to the left. Our temporary exhibitions, which change every few months, are located to the right.

If we want to, we can collect an 'Eye Spy' from the staff at the front desk. With this activity, we can search for objects or images of things in the museum as we move around.



STAYING SAFE AND PROTECTED INSIDE THE MUSEUM

We will find hand sanitiser available around the museum that we can use.

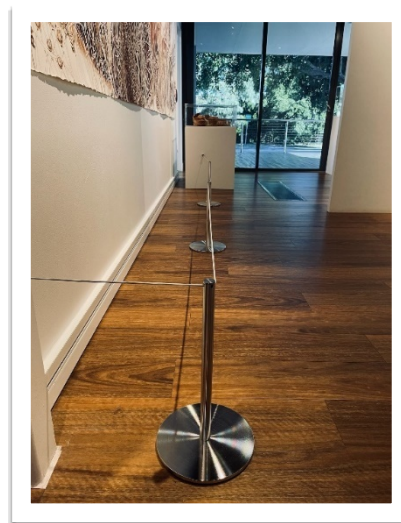


The museum staff regularly clean the museum, and we may see them cleaning during our visit.



We are welcome to wear a mask when we visit the museum. We can also wear gloves if it helps us to feel safe and protected. The staff may also choose to wear a mask or gloves from time to time.

There may be bollards in some areas of the museum, to help with people knowing which way to move around the building or in the exhibition spaces.



There is an emergency exit door at the far right-hand-side of the museum, which can take us outside to the back deck.

If we can't find our family or friends, we should return to the front desk and talk to a staff member. They will help us find our family or friends if we tell them we need help.

EXPLORING THE MUSEUM



Going Away

In this first section of the museum, we will see information on what people did when they visited Bribie Island in the past. There are no sounds or movements connected to the objects in this area.



Bribie Island history

This section contains information and photos on the walls, and some objects in cases including large whale bones. There are no sounds or movements in this area, but there is colour-changing lighting shining on a life-sized dugong that hangs from the ceiling.



Collection of Things

In this area there is a large display of treasured objects from within our museum collection. The objects are changed regularly, but there are always interesting things to look at. There is nothing in this display that moves, but there are bright lights shining on the objects.



The Koopa

There is a large ship model on the wall. Sometimes it makes sounds of a ship horn or people talking. There are screens and headphones in this area, where we can watch and listen to people talking about their holidays to Bribie Island. There is also a touchscreen where we can look at historic photographs.



Theatre

When we enter this room, we will see a panel with buttons where we can pick from films to watch. Some of the films have music and people talking, one of the films is silent. If we want the room darker, we can ask a staff member at the front desk to help. The volume can also be turned up or down by museum staff.



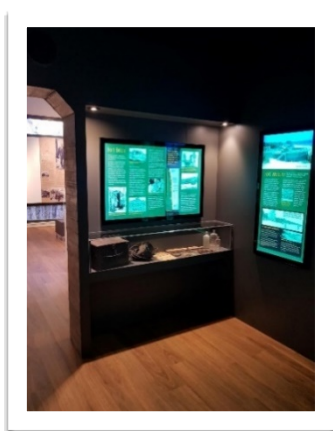
Imaginarium / Kids area

This area changes regularly. Sometimes it has books we can sit and read, or card games we can play, or kinetic sand we can touch. Sometimes it might include technology, such as old-fashioned gaming machines which might make noises or have flashing lights and buttons.



Ian Fairweather

This section of the museum is about an artist who lived on Bribie Island. It has objects in cases and photos and text on the walls. There are also two large tree sculptures, one of which has a man's face carved into it.



Bunker

This area of the museum is a small space and is quite dark. There are relics from the Second World War in display cases, and backlit information panels on the walls. There are also two dark diorama spaces. There are sounds of the ocean and a submarine playing in this space.



Temporary exhibition space

This area of the museum changes regularly. If we want to know what is happening in this space before our visit, we can call the museum and ask. The staff will tell us what to expect in this space. Sometimes there are TV screens playing slideshows of photos, sometimes there might be things making noise.

PRESERVATION STATION

The Preservation Station is a computer and scanning device which converts old slides and photographs into digital memories. Sometimes there may be a person, or people, using this equipment. There are no loud noises or flashing lights connected to the Preservation Station. The museum staff, or volunteers, can show us how this works if we are interested.



RESTING

We will find seats around the museum where we can stop to rest.



THE SHOP

The shop has things we can buy. It has books, jewellery, souvenirs, native ingredients, toys and homewares. Most of the items are made by local artists.

If we want to buy something the staff members can help us.



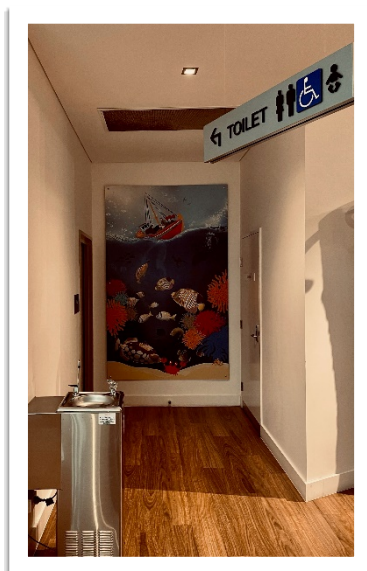
If we want to avoid the shop, we will exit the museum by walking through the centre of the building.

AMENITIES

If we need to use the bathroom we can find it at the back of the museum behind the front desk. The bathroom is accessible. We can choose to use paper towel or the hand dryer in the bathroom to dry our hands. The hand dryer is loud, so we can use the paper towel if we prefer.

We can ask a staff member to show us where the bathroom is. There is a large colourful underwater image on the wall near where the bathroom is located.

There is also a water cooler drinking fountain nearby, which we can use at any time.



EXIT

When we are ready to leave, we can ask a staff member for a guide that will tell us what exhibitions and events are coming up at this museum and other City of Moreton Bay museums and galleries.

We will exit the museum through the same door that we came in.

We had a great time visiting Bribie Island Seaside Museum and look forward to visiting again!

THINGS WE CAN DO

Some of the fun things we can do at this museum are:

Exhibition openings: These are when the museum celebrates a new exhibition with morning or afternoon tea, guest speakers and other events depending on what it is about.

Workshops: There are different workshops organised for adults and children throughout the year.

Talks: The museum likes to invite experts to come to the museum and discuss different topics related to the exhibitions.

Group tours: The museum caters for groups to have tours of the museum and the temporary exhibition space.

We can ask the staff members for more information about any of these events.

We can also tell the staff member if there are things we think they could do to help us in the future.

FURTHER INFORMATION AND CONTACT DETAILS

Bribie Island Seaside Museum

Phone: (07) 5433 2596

Email: seaside.museum@moretonbay.qld.gov.au

Address: 1 South Esplanade, Bongaree QLD 4507

Website: <https://www.moretonbay.qld.gov.au/Galleries-Museums/Locations/Seaside-Museum>

Opening hours:

Wednesday to Friday, 10:00 AM - 4:00 PM

Saturday to Sunday, 10:00 AM - 3:00 PM

Closed on Mondays, Tuesdays and Public Holidays