



# SUPPORTING INFORMATION

**for respective items considered at**

**Coordination Committee Meeting**

**27 February 2018**

**SUPPORTING INFORMATION**

**Ref: A165910944**

The following list of supporting information is provided for:

**ITEM 2.1**

**DA/35498/2017/V2D - MATERIAL CHANGE OF USE - DEVELOPMENT PERMIT FOR DUAL OCCUPANCY - 1 KAMALA STREET, BANKSIA BEACH (LOT 379 SP291531) - DIVISION 1**

**#1 Locality Plan**

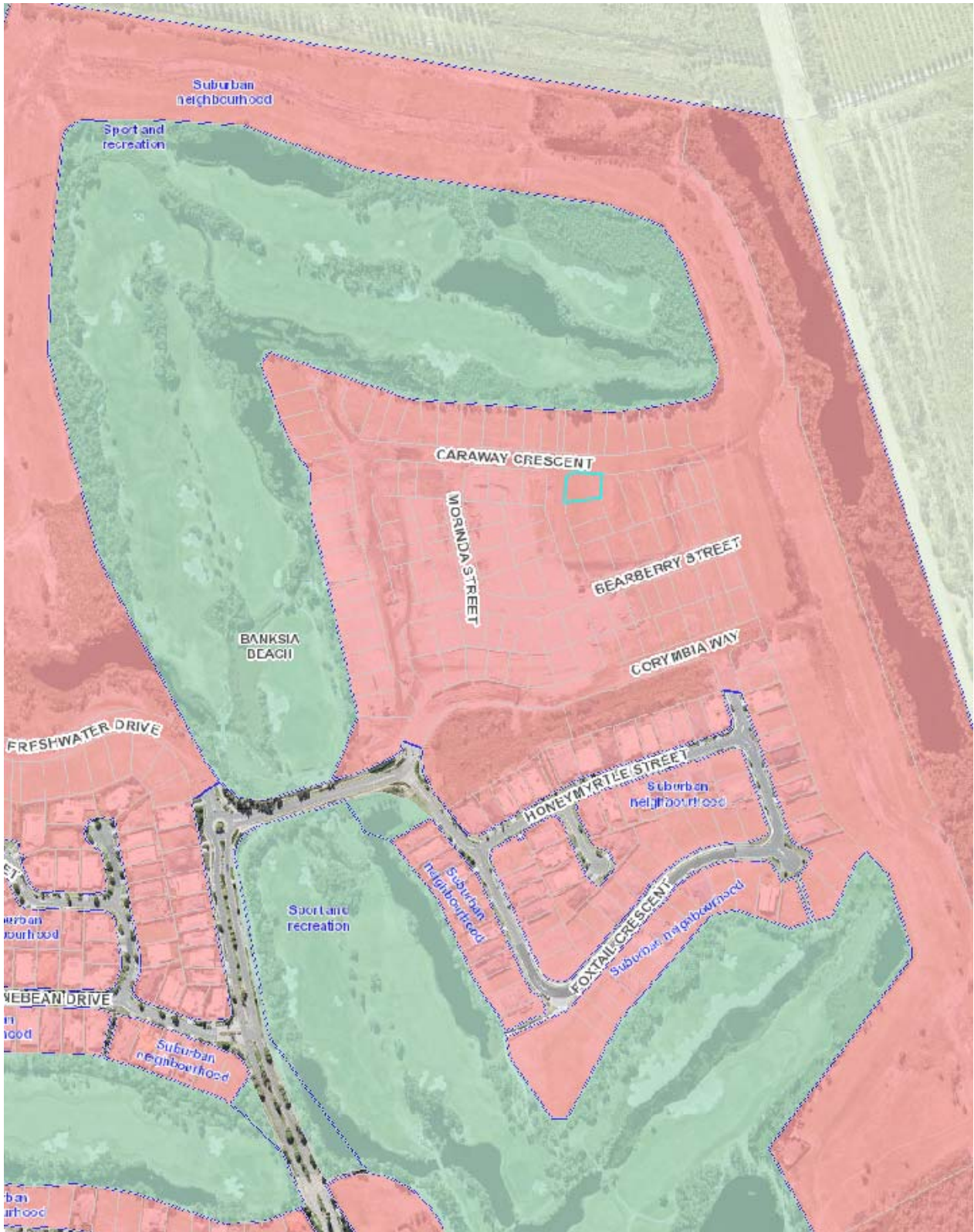
**#2 Zoning Map**

**#3 Material Change of Use Plans**

**#4 Deed of Agreement Plan**

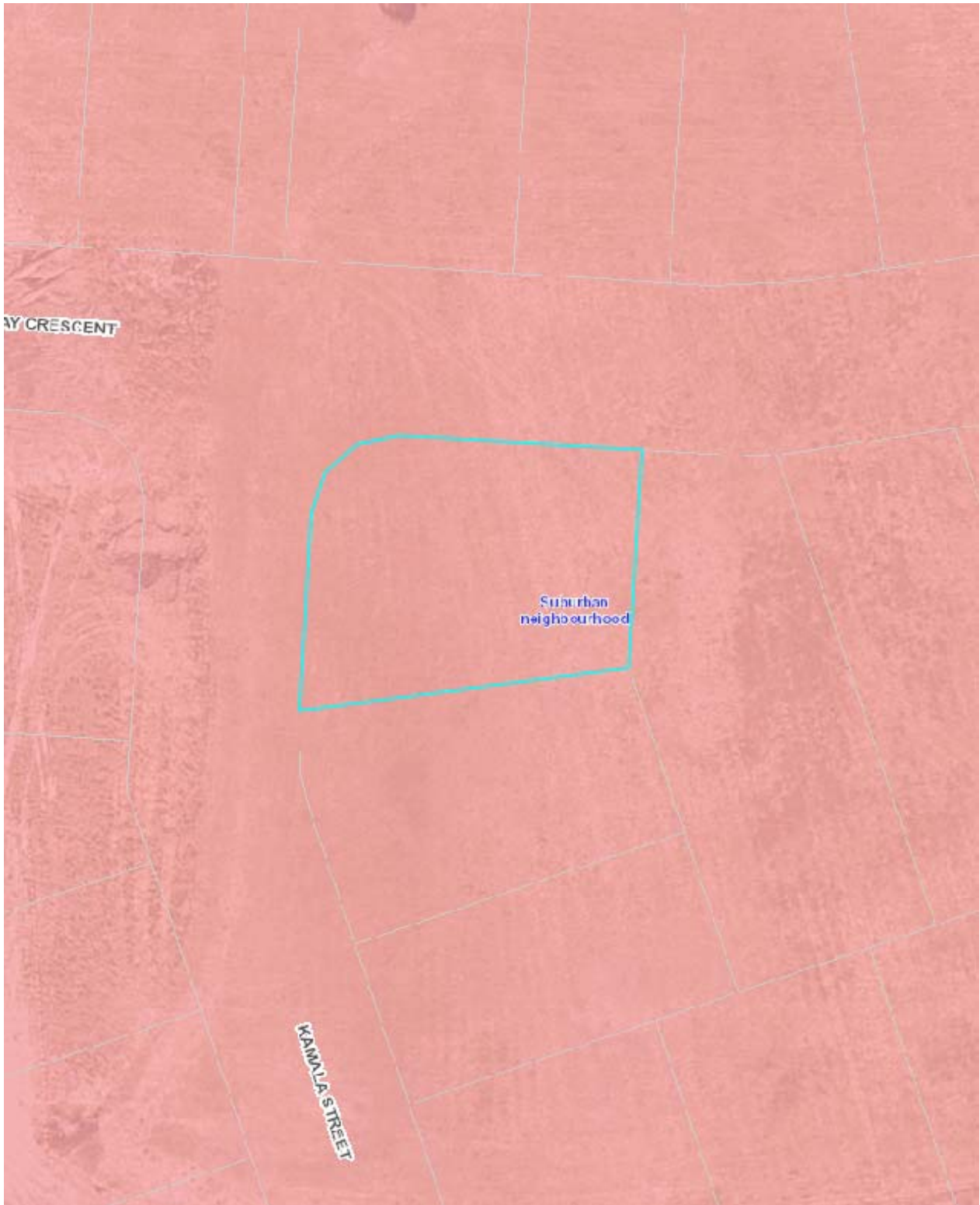
ITEM 2.1 DA/35498/2017/V2D - MATERIAL CHANGE OF USE - DEVELOPMENT PERMIT FOR DUAL OCCUPANCY  
- 1 KAMALA STREET, BANKSIA BEACH (LOT 379 SP291531) - DIVISION 1 (Cont.)

#1 Locality Plan



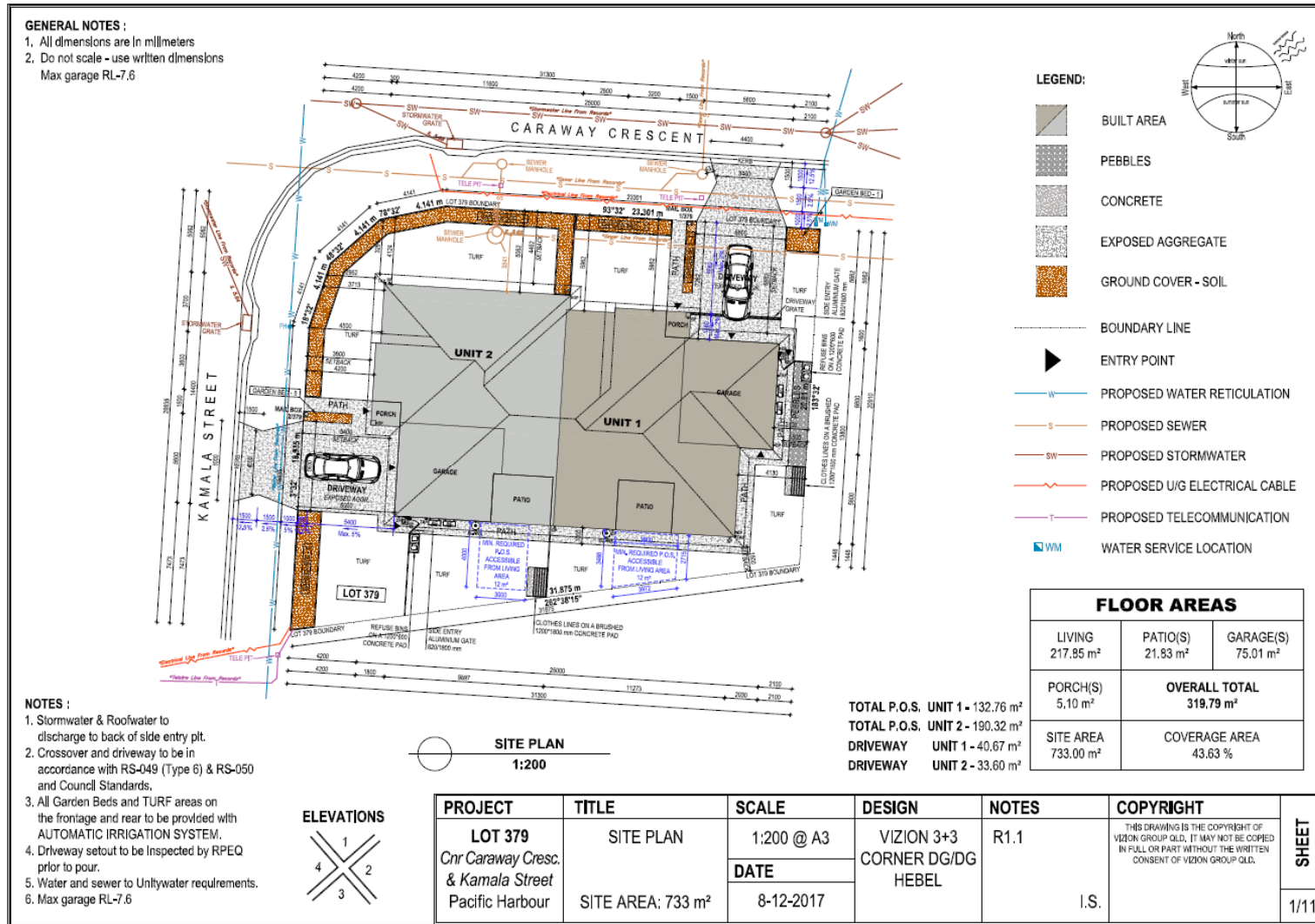
ITEM 2.1 DA/35498/2017/V2D - MATERIAL CHANGE OF USE - DEVELOPMENT PERMIT FOR DUAL OCCUPNACY  
- 1 KAMALA STREET, BANKSIA BEACH (LOT 379 SP291531) - DIVISION 1 (Cont.)

**#2 Zoning Map**

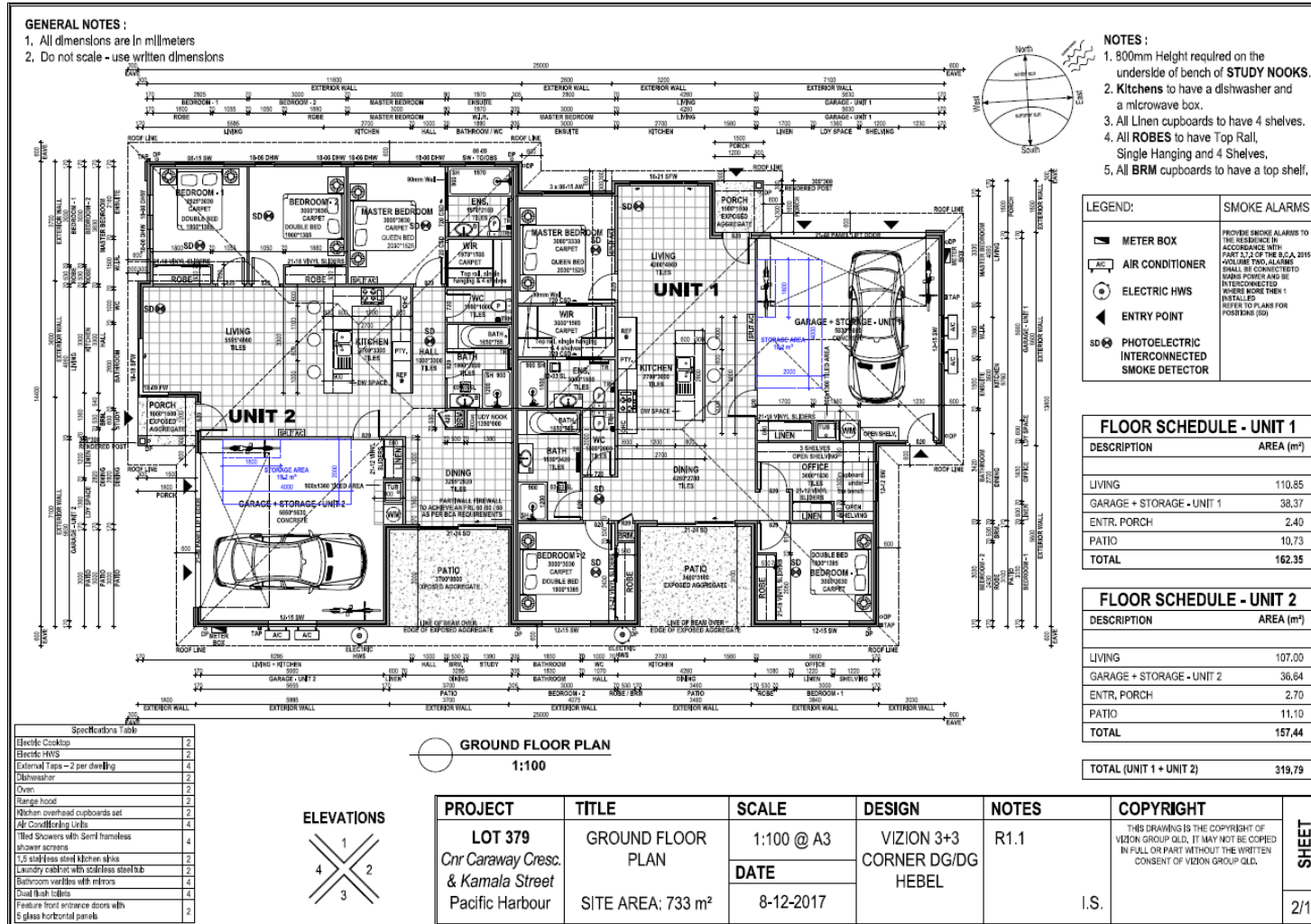


ITEM 2.1 DA/35498/2017/V2D - MATERIAL CHANGE OF USE - DEVELOPMENT PERMIT FOR DUAL OCCUPANCY - 1 KAMALA STREET, BANKSIA BEACH (LOT 379 SP291531) - DIVISION 1 (Cont.)

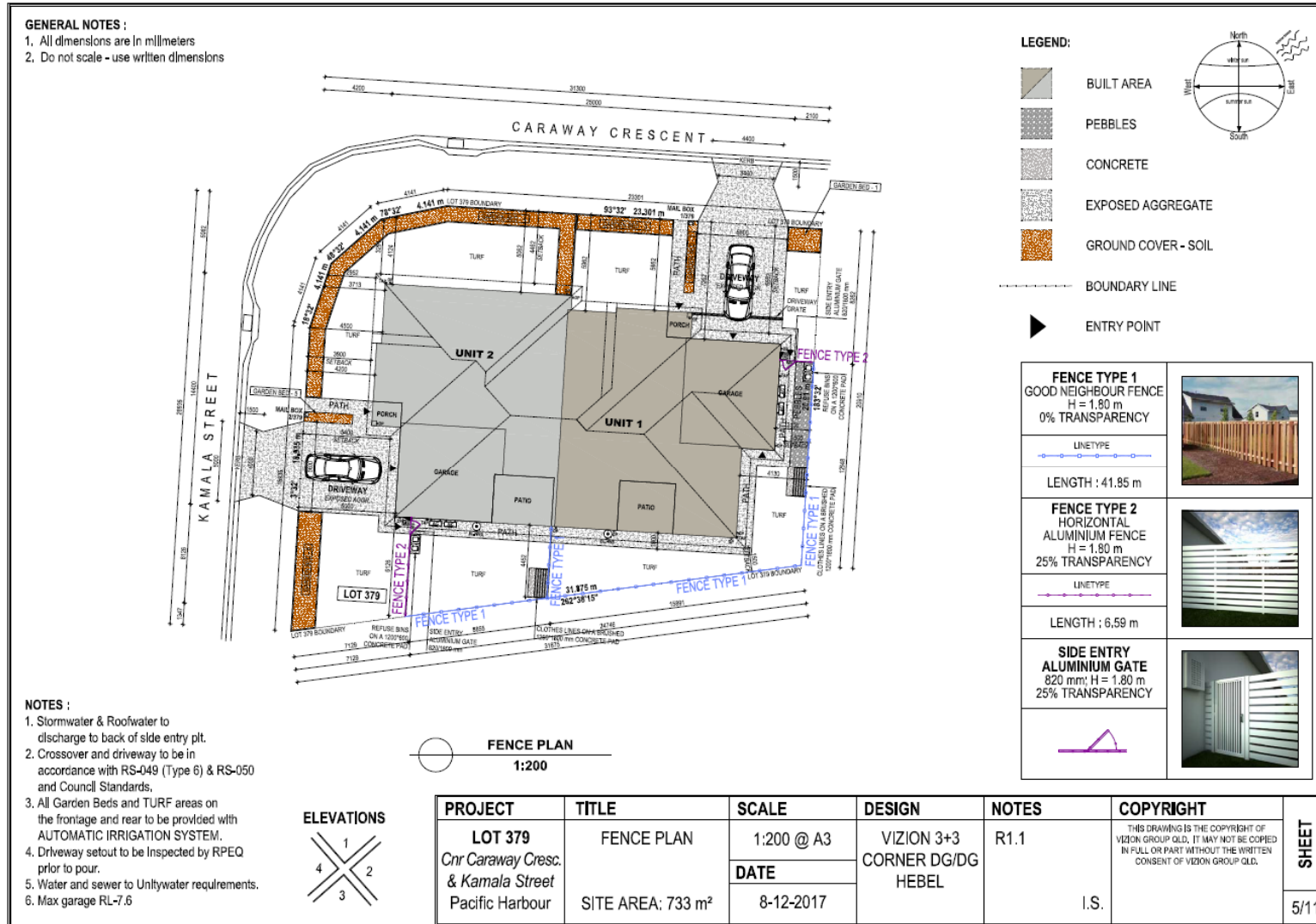
#3 Material Change of Use Plans



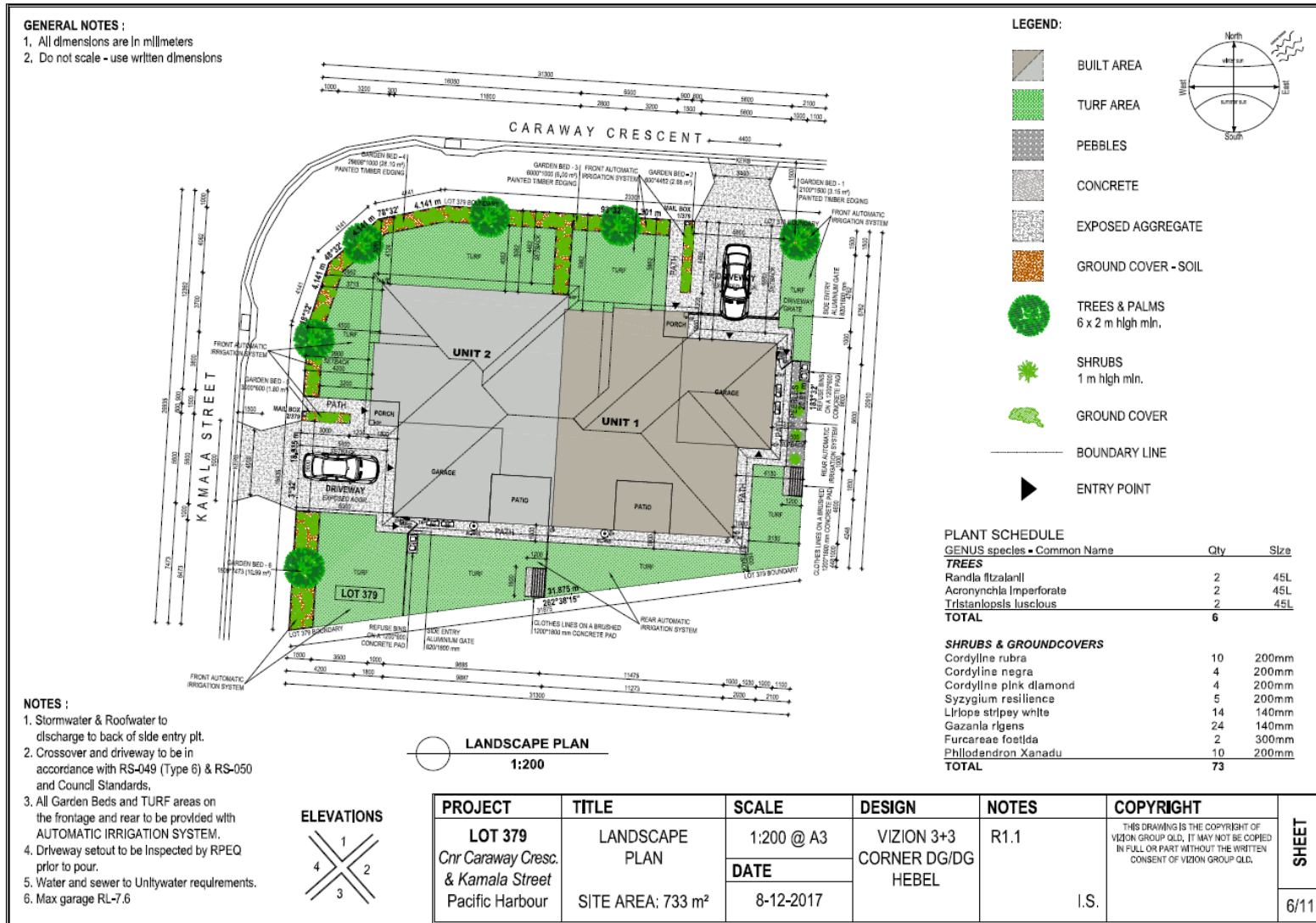
ITEM 2.1 DA/35498/2017/V2D - MATERIAL CHANGE OF USE - DEVELOPMENT PERMIT FOR DUAL OCCUPANCY - 1 KAMALA STREET, BANKSIA BEACH (LOT 379 SP291531) - DIVISION 1 (Cont.)



ITEM 2.1 DA/35498/2017/V2D - MATERIAL CHANGE OF USE - DEVELOPMENT PERMIT FOR DUAL OCCUPANCY - 1 KAMALA STREET, BANKSIA BEACH (LOT 379 SP291531) - DIVISION 1 (Cont.)

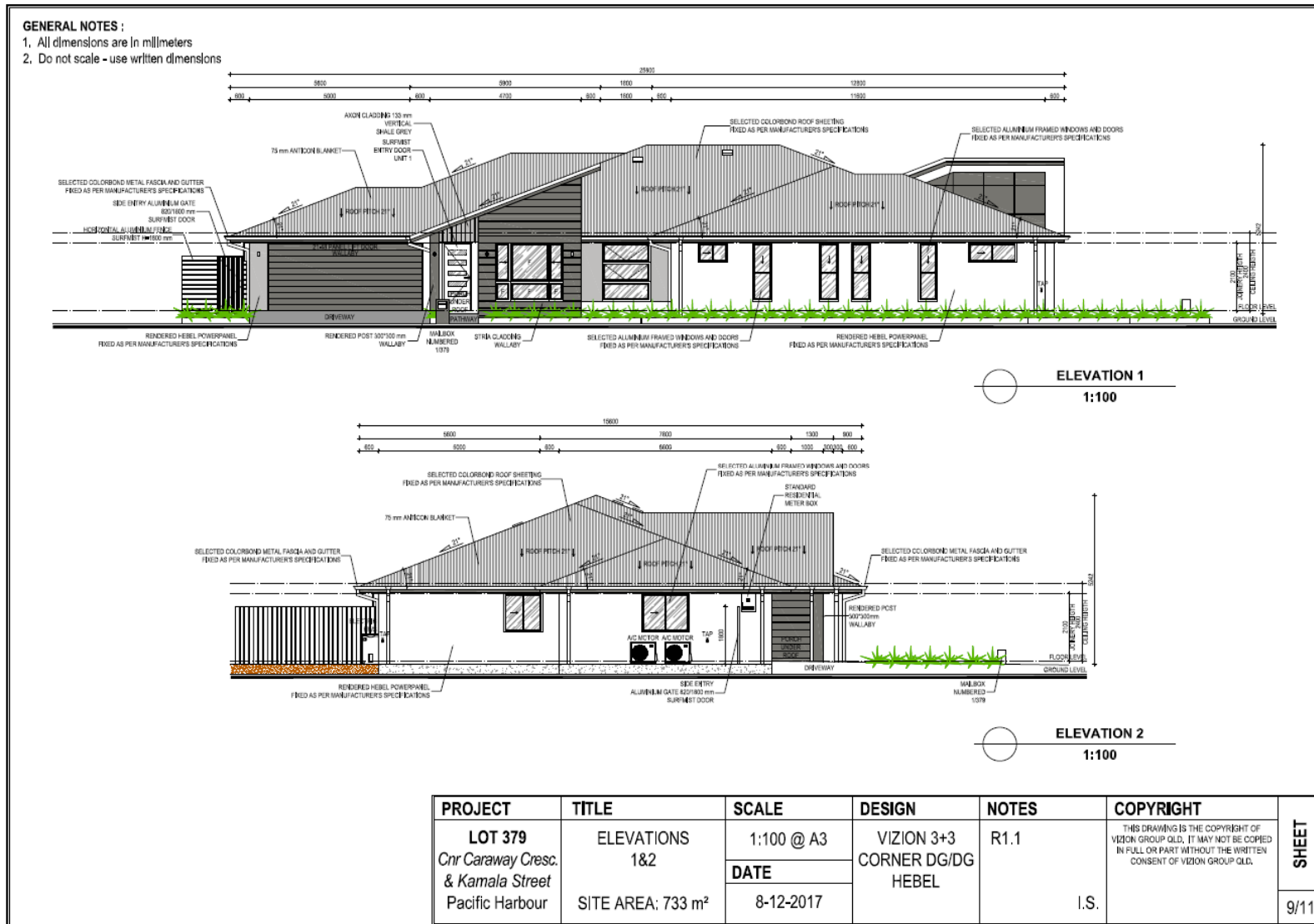


ITEM 2.1 DA/35498/2017/V2D - MATERIAL CHANGE OF USE - DEVELOPMENT PERMIT FOR DUAL OCCUPANCY - 1 KAMALA STREET, BANKSIA BEACH (LOT 379 SP291531) - DIVISION 1 (Cont.)





ITEM 2.1 DA/35498/2017/V2D - MATERIAL CHANGE OF USE - DEVELOPMENT PERMIT FOR DUAL OCCUPANCY - 1 KAMALA STREET, BANKSIA BEACH (LOT 379 SP291531) - DIVISION 1 (Cont.)

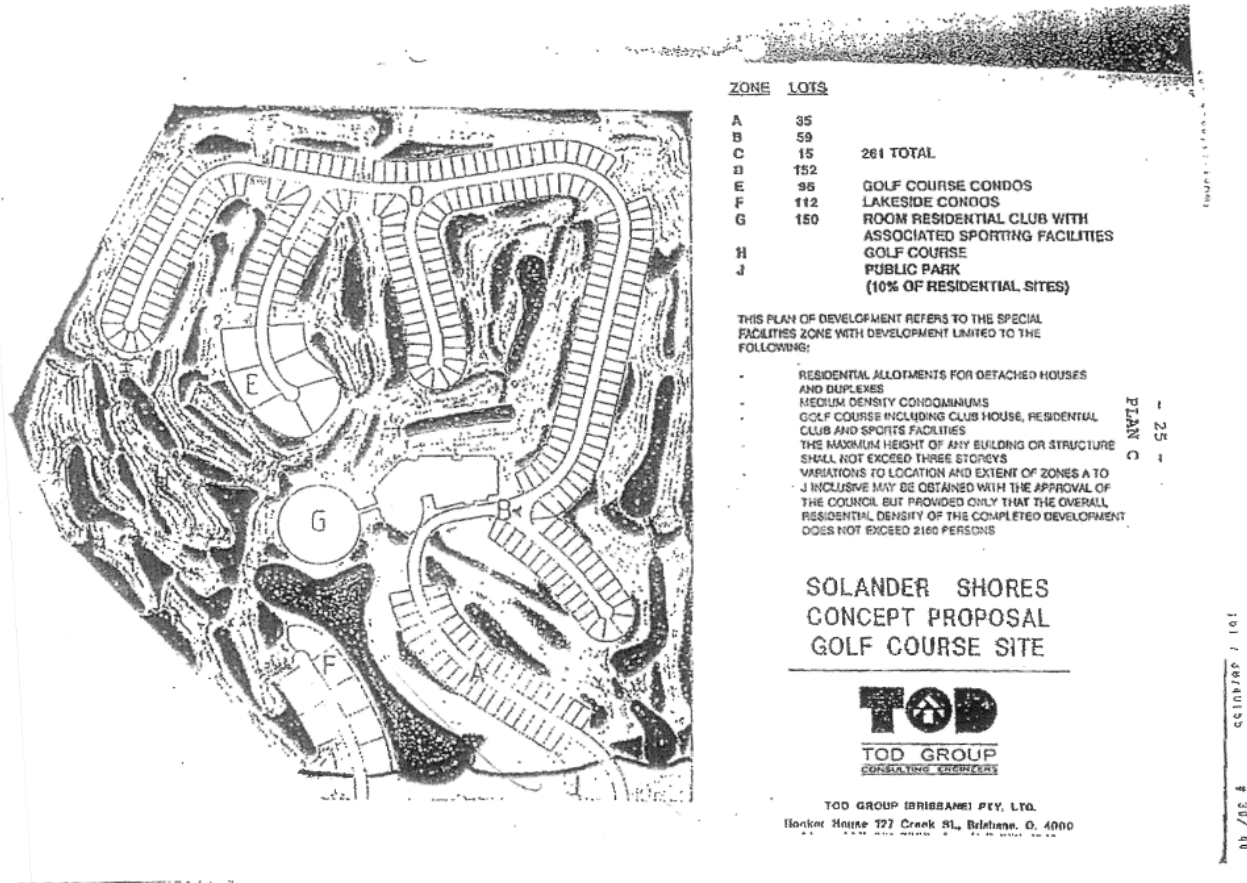


ITEM 2.1 DA/35498/2017/V2D - MATERIAL CHANGE OF USE - DEVELOPMENT PERMIT FOR DUAL OCCUPANCY - 1 KAMALA STREET, BANKSIA BEACH (LOT 379 SP291531) - DIVISION 1 (Cont.)



ITEM 2.1 DA/35498/2017/V2D - MATERIAL CHANGE OF USE - DEVELOPMENT PERMIT FOR DUAL OCCUPNACY - 1 KAMALA STREET, BANKSIA BEACH (LOT 379 SP291531) - DIVISION 1 (Cont.)

#4 Deed of Agreement Plan



**SUPPORTING INFORMATION**

**Ref: A16592273**

The following list of supporting information is provided for:

**ITEM 2.2**

**DA/35500/2017/V2D - MATERIAL CHANGE OF USE - DEVELOPMENT PERMIT FOR DUAL OCCUPANCY - 11 BEARBERRY STREET, BANKSIA BEACH (LOT 365 SP291531) - DIVISION 1**

**#1 Locality Plan**

**#2 Zoning Map**

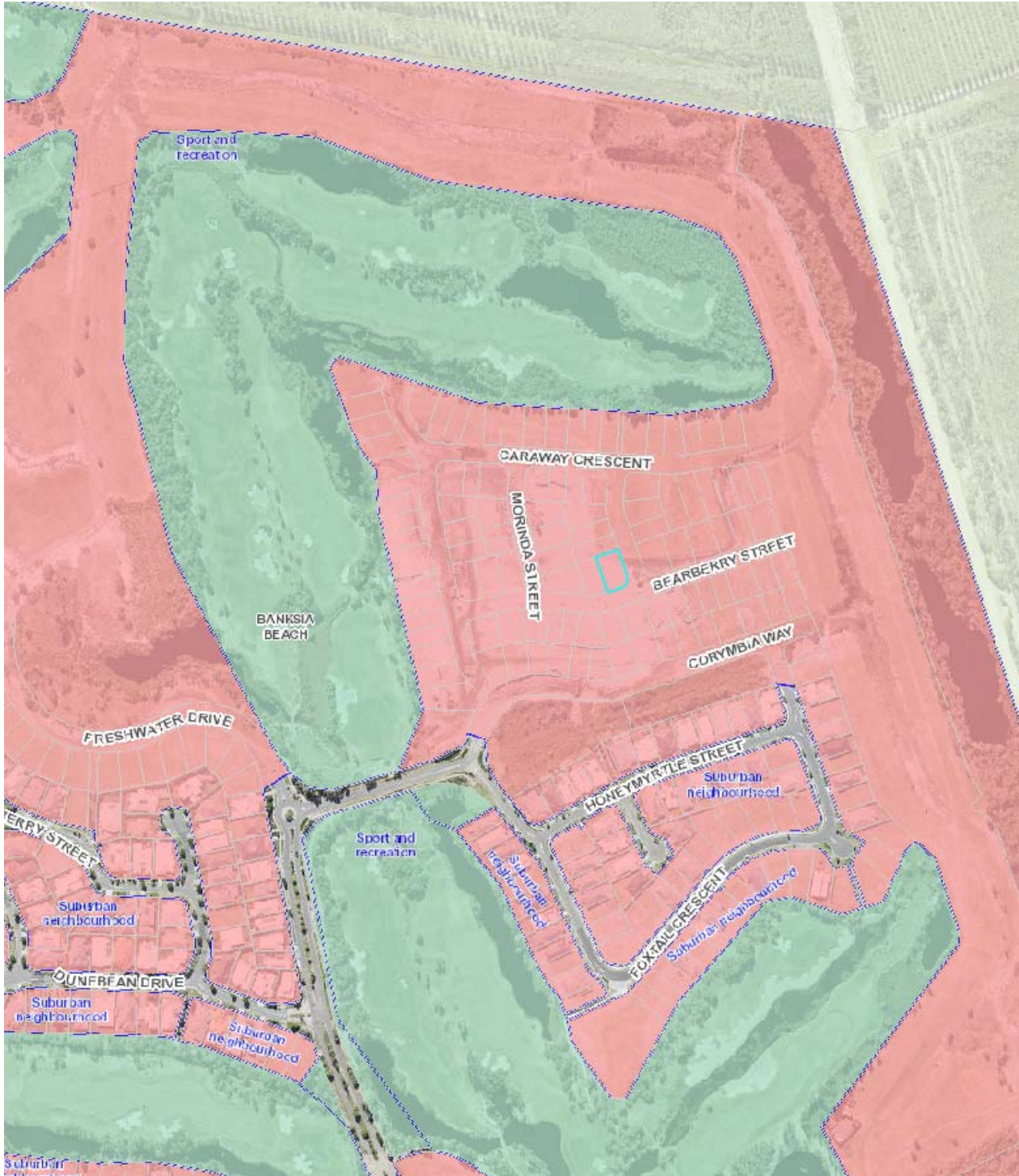
**#3 Material Change of Use Plans**

**#4 Deed of Agreement Plan**

**#5 Submissions**

ITEM 2.2 DA/35500/2017/V2D - MATERIAL CHANGE OF USE - DEVELOPMENT PERMIT FOR DUAL OCCUPANCY  
- 11 BEARBERRY STREET, BANKSIA BEACH (LOT 365 SP291531) - DIVISION 1 (Cont.)

#1 Locality Plan



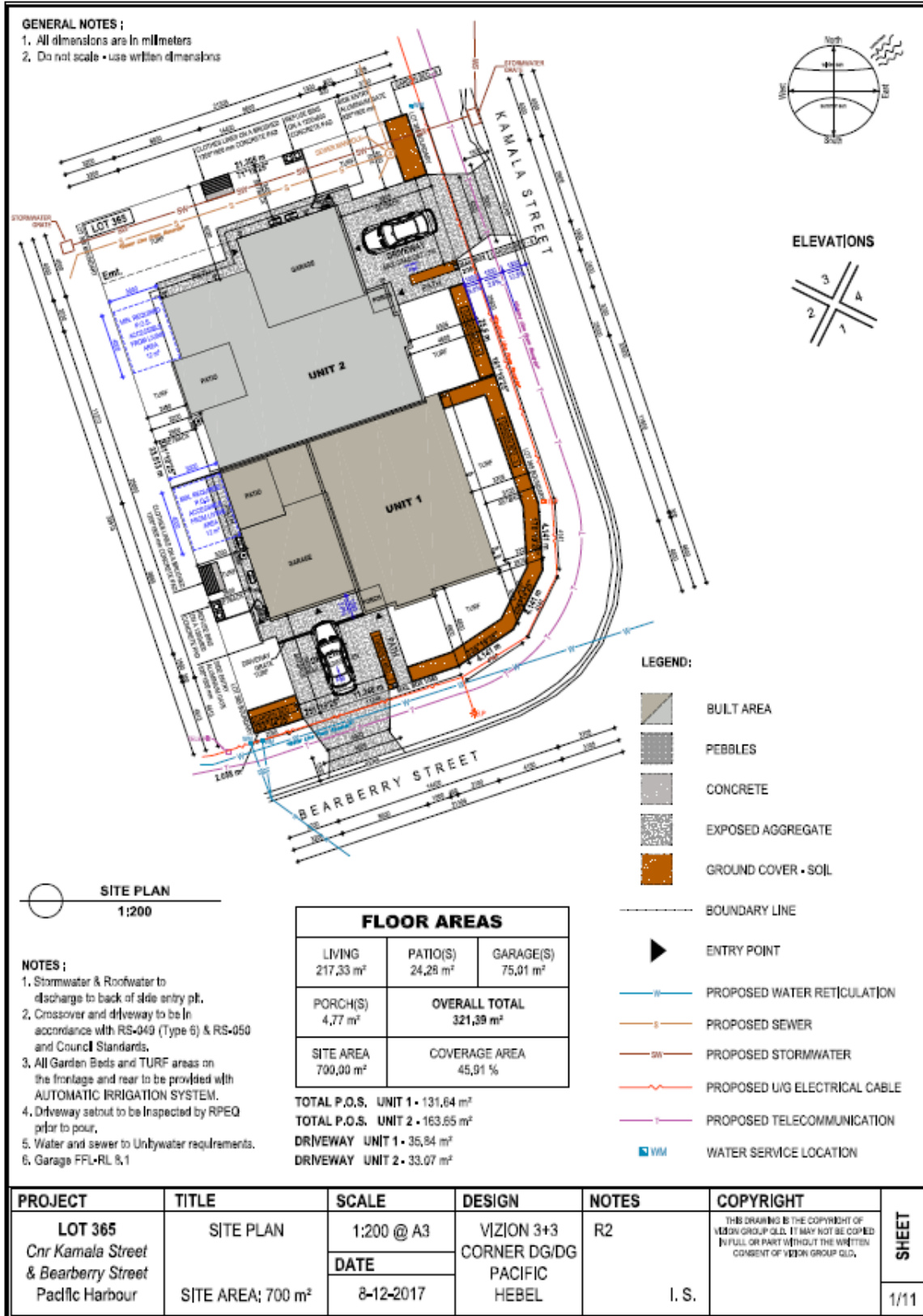
ITEM 2.2 DA/35500/2017/V2D - MATERIAL CHANGE OF USE - DEVELOPMENT PERMIT FOR DUAL OCCUPANCY  
- 11 BEARBERRY STREET, BANKSIA BEACH (LOT 365 SP291531) - DIVISION 1 (Cont.)

**#2 Zoning Map**

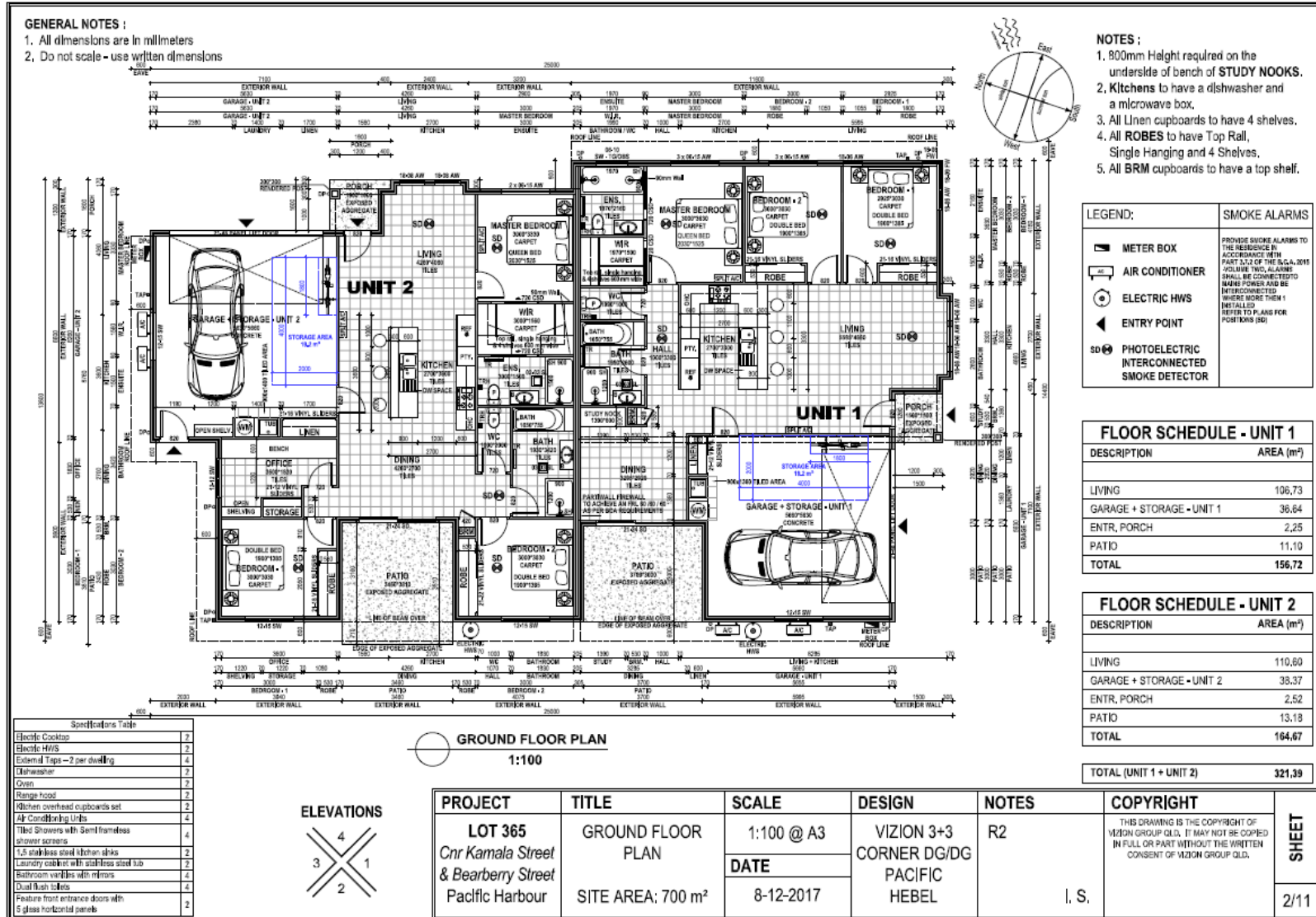


ITEM 2.2 DA/35500/2017/V2D - MATERIAL CHANGE OF USE - DEVELOPMENT PERMIT FOR DUAL OCCUPANCY - 11 BEARBERRY STREET, BANKSIA BEACH (LOT 365 SP291531) - DIVISION 1 (Cont.)

#3 Material Change of Use Plans

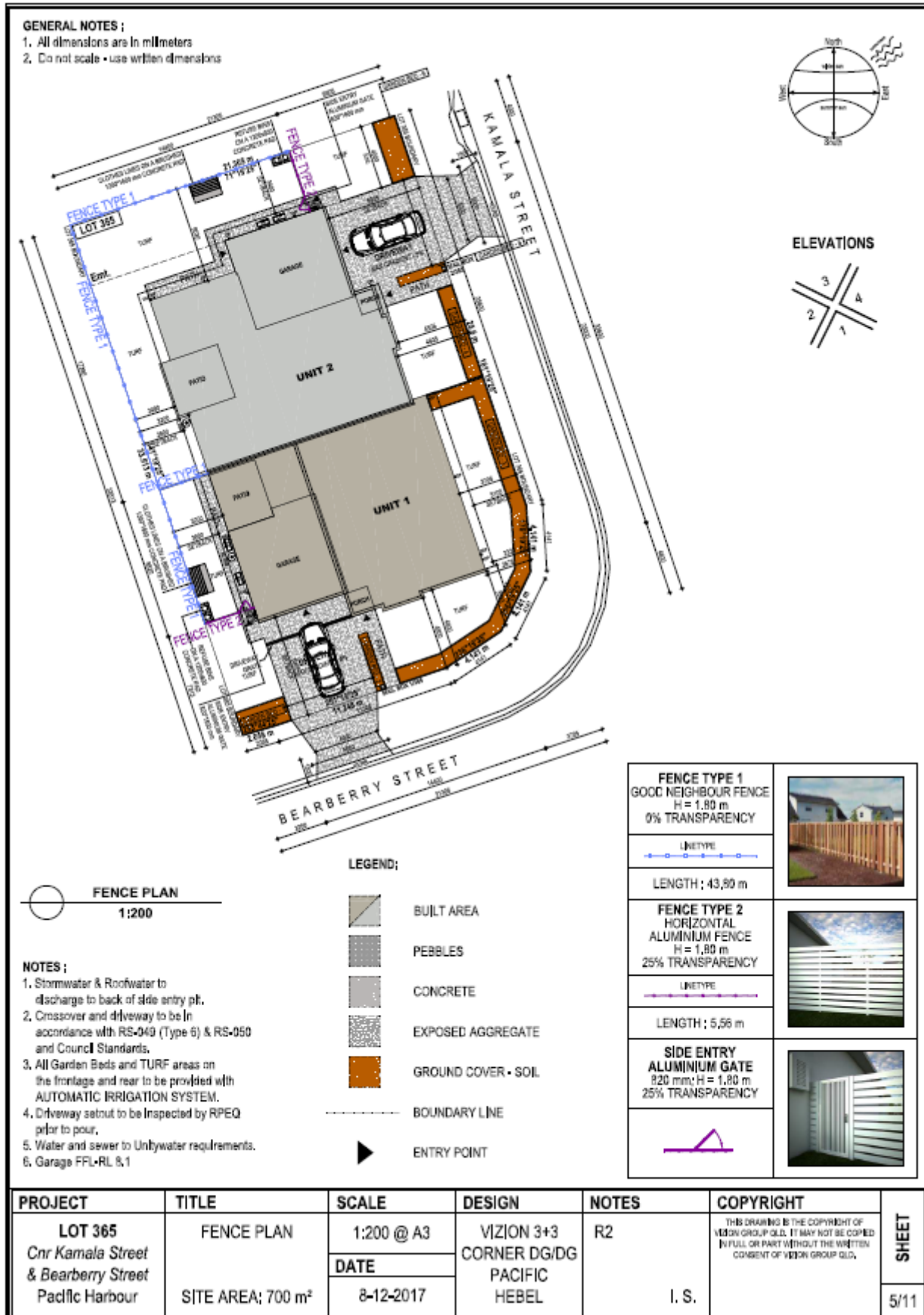


ITEM 2.2 DA/35500/2017/V2D - MATERIAL CHANGE OF USE - DEVELOPMENT PERMIT FOR DUAL OCCUPANCY - 11 BEARBERRY STREET, BANKSIA BEACH (LOT 365 SP291531) - DIVISION 1 (Cont.)

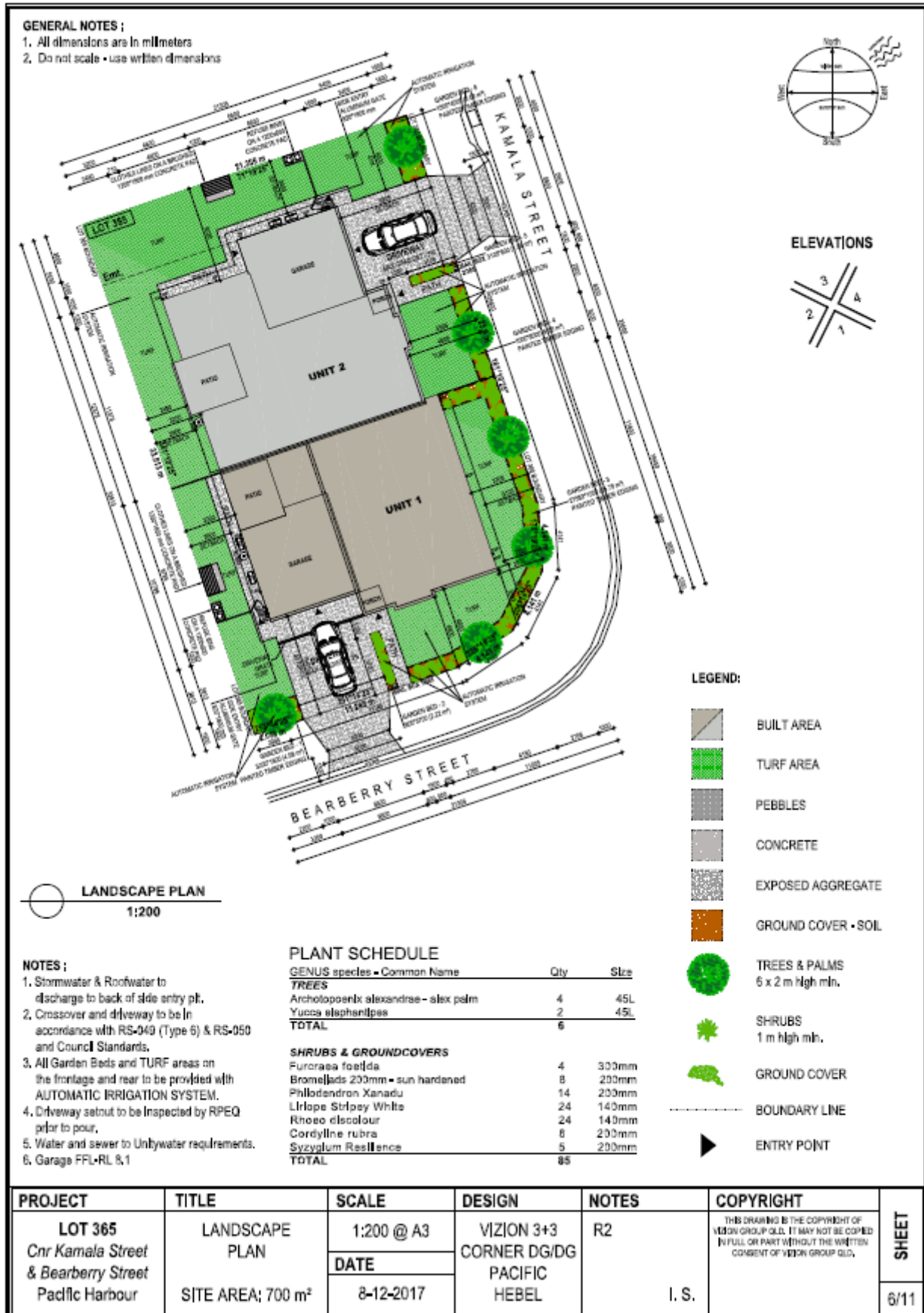




ITEM 2.2 DA/35500/2017/V2D - MATERIAL CHANGE OF USE - DEVELOPMENT PERMIT FOR DUAL OCCUPANCY - 11 BEARBERRY STREET, BANKSIA BEACH (LOT 365 SP291531) - DIVISION 1 (Cont.)



ITEM 2.2 DA/35500/2017/V2D - MATERIAL CHANGE OF USE - DEVELOPMENT PERMIT FOR DUAL OCCUPANCY - 11 BEARBERRY STREET, BANKSIA BEACH (LOT 365 SP291531) - DIVISION 1 (Cont.)



PROJECT	TITLE	SCALE	DESIGN	NOTES	COPYRIGHT	SHEET
LOT 365 Cnr Kamala Street & Bearberry Street Pacific Harbour	LANDSCAPE PLAN	1:200 @ A3	VIZION 3+3 CORNER DG/DG PACIFIC HEBEL	R2	THIS DRAWING IS THE COPYRIGHT OF VIZION GROUP QLD. IT MAY NOT BE COPIED IN FULL OR PART WITHOUT THE WRITTEN CONSENT OF VIZION GROUP QLD.	
	SITE AREA: 700 m <sup>2</sup>	DATE 8-12-2017		I. S.		

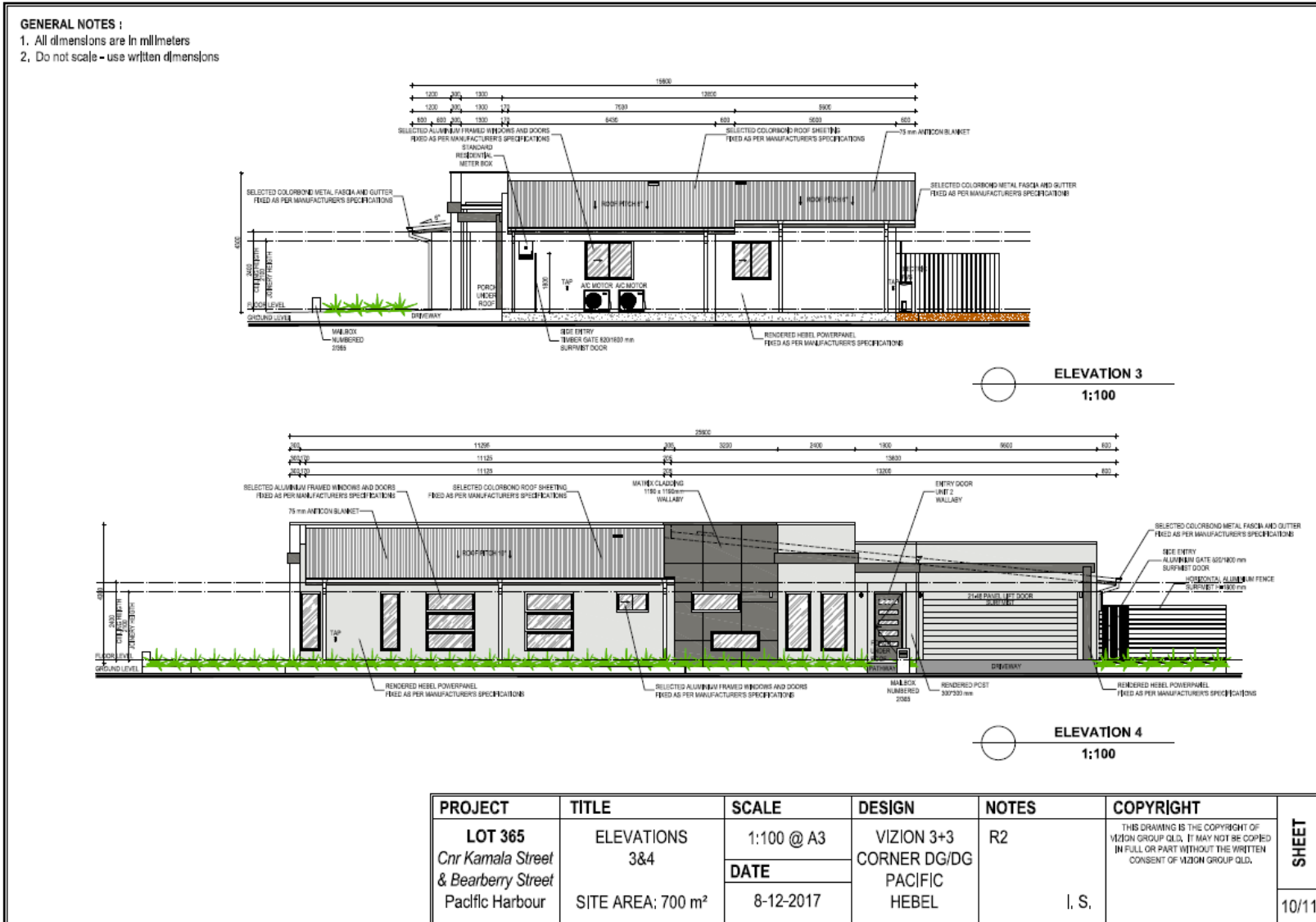
6/11

ITEM 2.2 DA/35500/2017/V2D - MATERIAL CHANGE OF USE - DEVELOPMENT PERMIT FOR DUAL OCCUPANCY - 11 BEARBERRY STREET, BANKSIA BEACH (LOT 365 SP291531) - DIVISION 1 (Cont.)



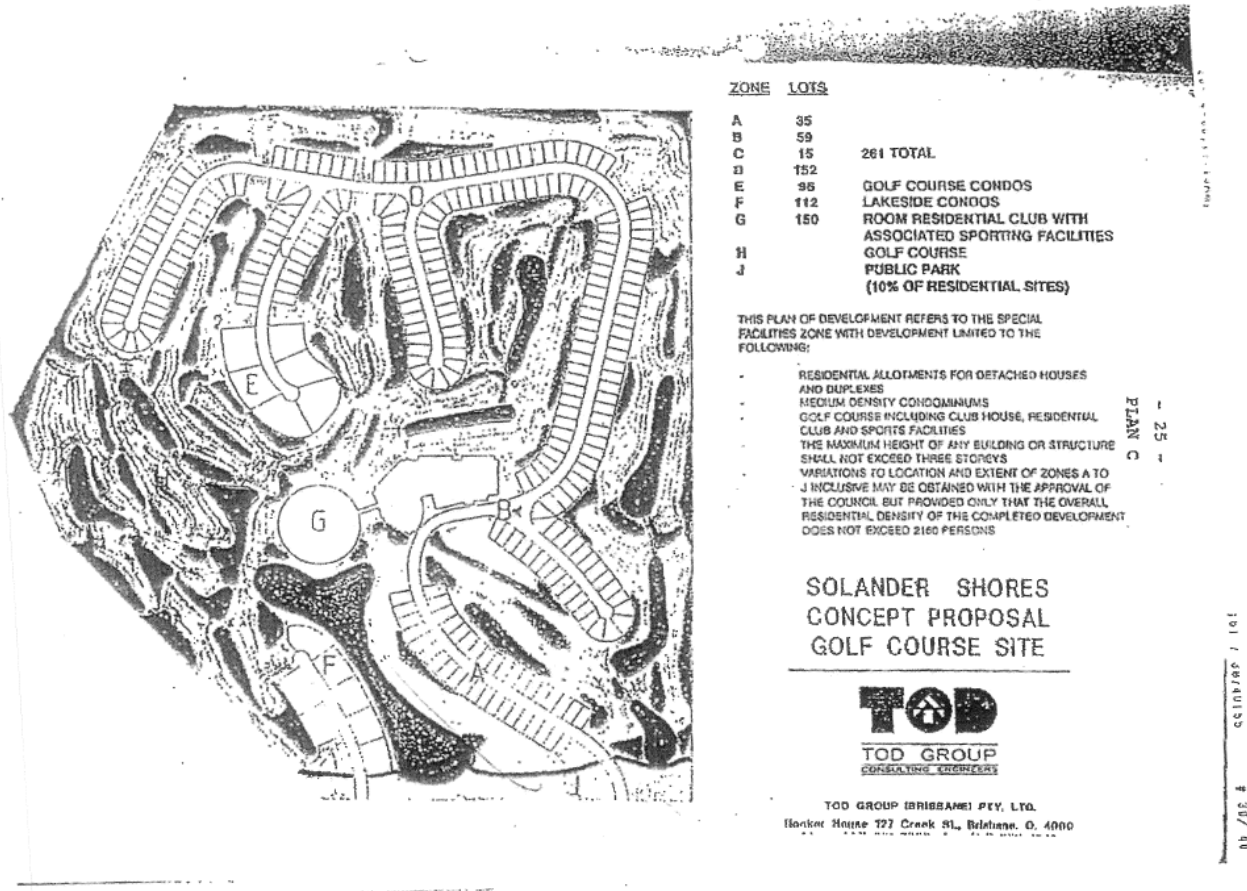
# Moreton Bay Regional Council

**ITEM 2.2 DA/35500/2017/V2D - MATERIAL CHANGE OF USE - DEVELOPMENT PERMIT FOR DUAL OCCUPANCY - 11 BEARBERRY STREET, BANKSIA BEACH (LOT 365 SP291531) - DIVISION 1 (Cont.)**



ITEM 2.2 DA/35500/2017/V2D - MATERIAL CHANGE OF USE - DEVELOPMENT PERMIT FOR DUAL OCCUPANCY - 11 BEARBERRY STREET, BANKSIA BEACH (LOT 365 SP291531) - DIVISION 1 (Cont.)

#4 Deed of Agreement Plan



ITEM 2.2 DA/35500/2017/V2D - MATERIAL CHANGE OF USE - DEVELOPMENT PERMIT FOR DUAL OCCUPANCY  
- 11 BEARBERRY STREET, BANKSIA BEACH (LOT 365 SP291531) - DIVISION 1 (Cont.)

**#5 Submissions**

**From:** Bev Mills  
**To:** [MBRC Incoming Mail](#)  
**Subject:** Fw: Submission - DA/35500/2017/V2D  
**Date:** Monday, 5 February 2018 5:36:39 PM

---

Sent from Windows Mail

---

**From:** [Bev Mills](#)  
**Sent:** Monday, February 5, 2018 5:12 PM  
**To:** [mbrc@moreton.bay.qld.gov.au](mailto:mbrc@moreton.bay.qld.gov.au)

Sent from Windows Mail

We hereby make our objections known re the above application for the following reasons.

- . This area has only narrow roads and one entry into the estate.
- . This is a new area and families living here were sold the land as purely single unit blocks.
- . The worry is the fact that this will alter the tone of the area (particularly if these dwellings are constructed for rental).
- . The signs for this Change of Use were erected on a Sunday. It is behind a gated fence with a Do Not Enter sign erected by the Earthworks Company. It has not been available for everyone to see.

David and Beverley Mills  
16 Bearberry Street  
Banksia Beach

05 February, 2018.

**SUPPORTING INFORMATION**

**Ref: A16593817**

The following list of supporting information is provided for:

**ITEM 2.3**

**DA/35501/2017/V2D - MATERIAL CHANGE OF USE - DEVELOPMENT PERMIT FOR DUAL OCCUPANCY - 22 CARAWAY CRESCENT, BANKSIA BEACH (LOT 648 SP291531) - DIVISION 1**

***#1 Locality Plan***

***#2 Zoning Map***

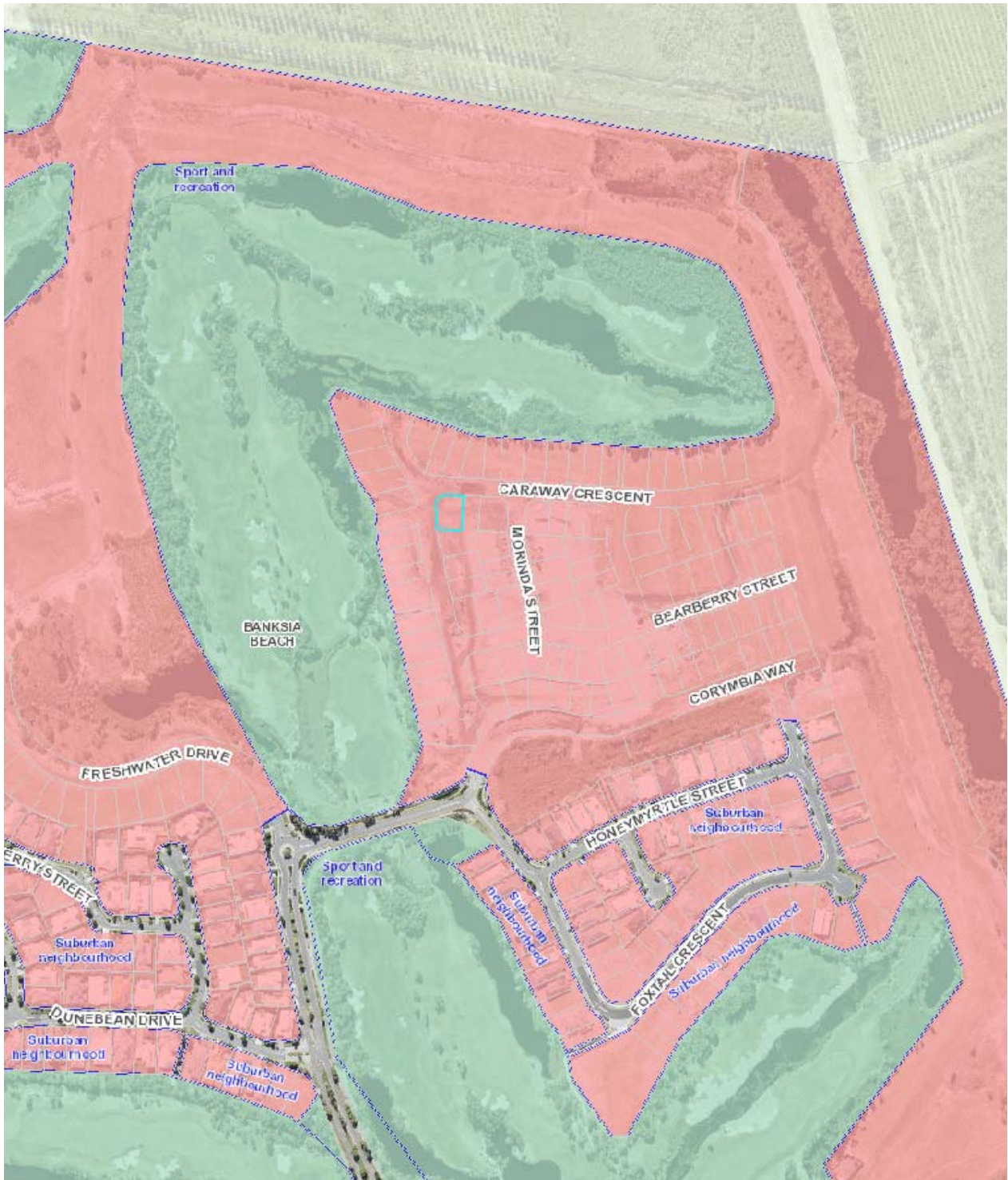
***#3 Proposed Material Change of Use Plans***

***#4 Deed of Agreement Plan***

***#5 Submissions***

ITEM 2.3 DA/35501/2017/V2D - MATERIAL CHANGE OF USE - DEVELOPMENT PERMIT FOR DUAL OCCUPANCY  
- 22 CARAWAY CRESCENT, BANKSIA BEACH (LOT 648 SP291531) - DIVISION 1 (Cont.)

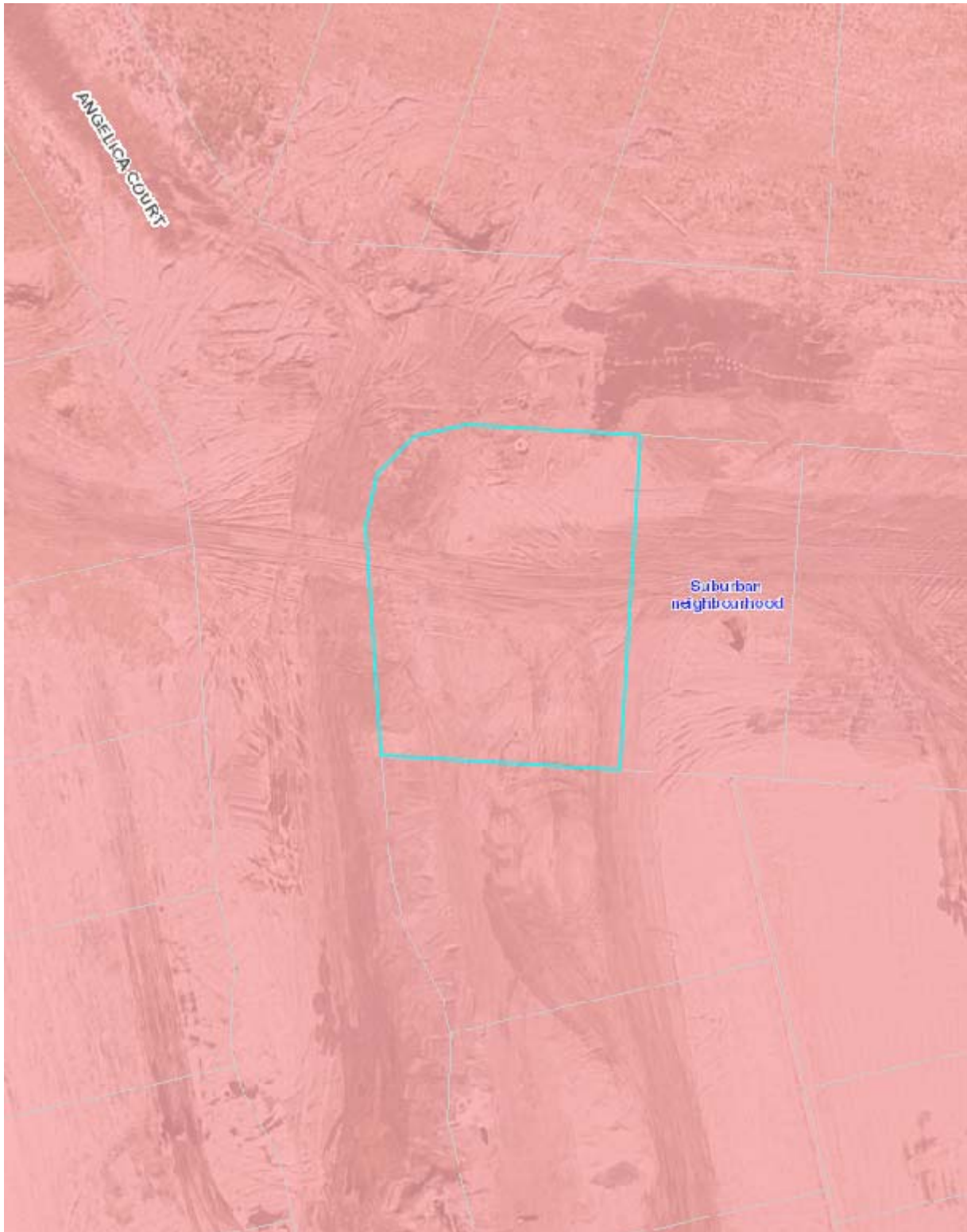
#1 Locality Plan





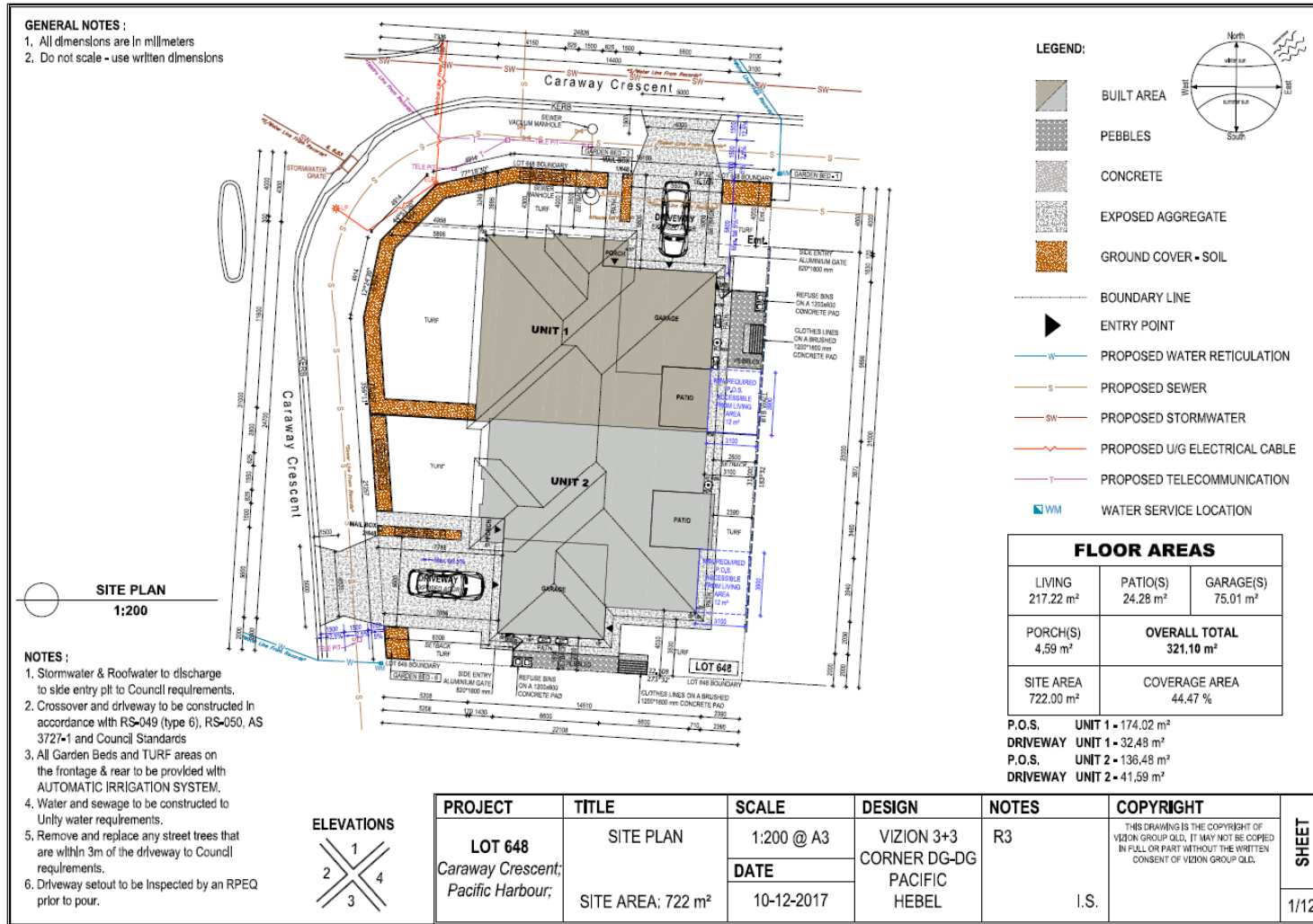
ITEM 2.3 DA/35501/2017/V2D - MATERIAL CHANGE OF USE - DEVELOPMENT PERMIT FOR DUAL OCCUPANCY  
- 22 CARAWAY CRESCENT, BANKSIA BEACH (LOT 648 SP291531) - DIVISION 1 (Cont.)

**#2 Zoning Map**

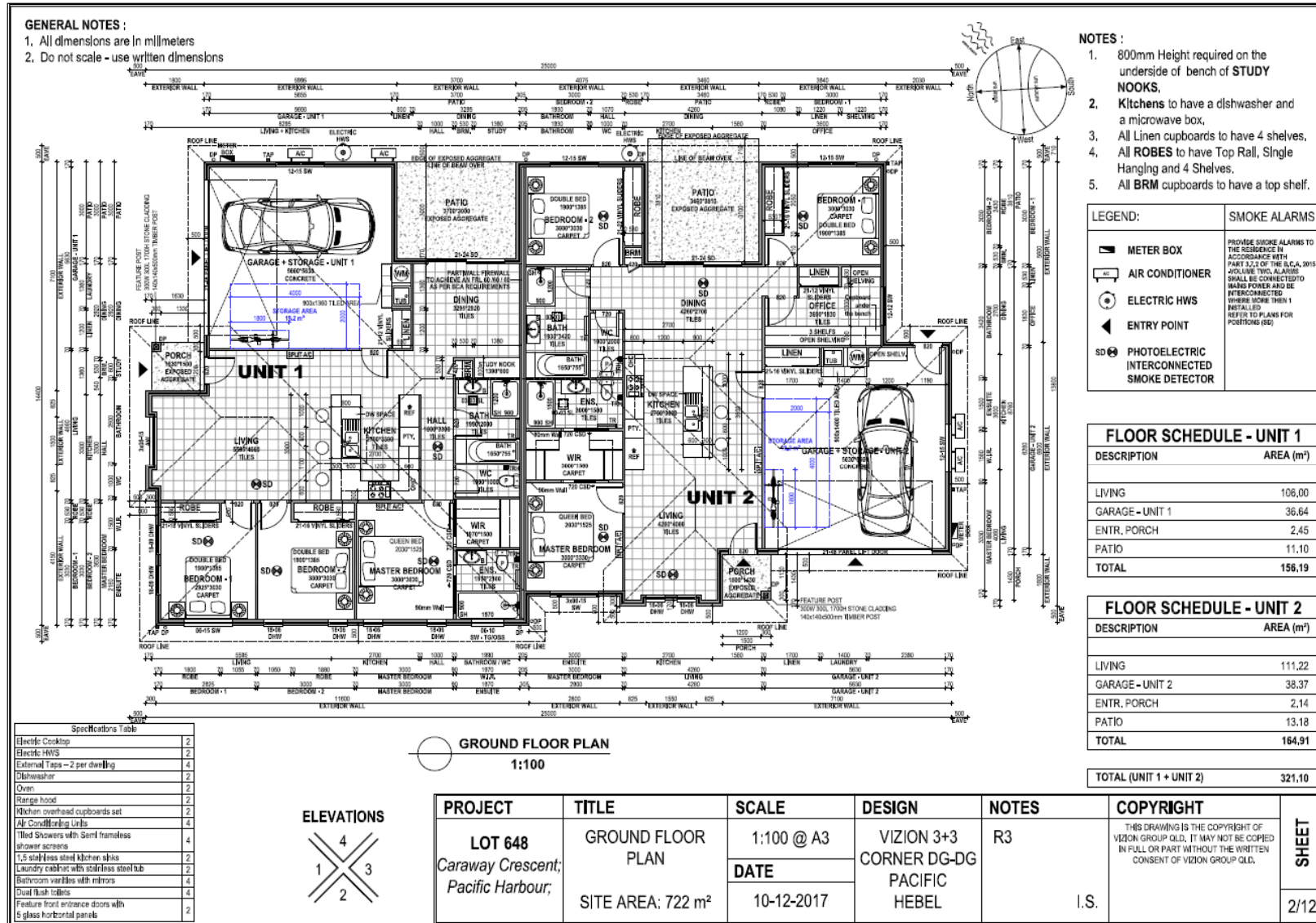


ITEM 2.3 DA/35501/2017/V2D - MATERIAL CHANGE OF USE - DEVELOPMENT PERMIT FOR DUAL OCCUPANCY - 22 CARAWAY CRESCENT, BANKSIA BEACH (LOT 648 SP291531) - DIVISION 1 (Cont.)

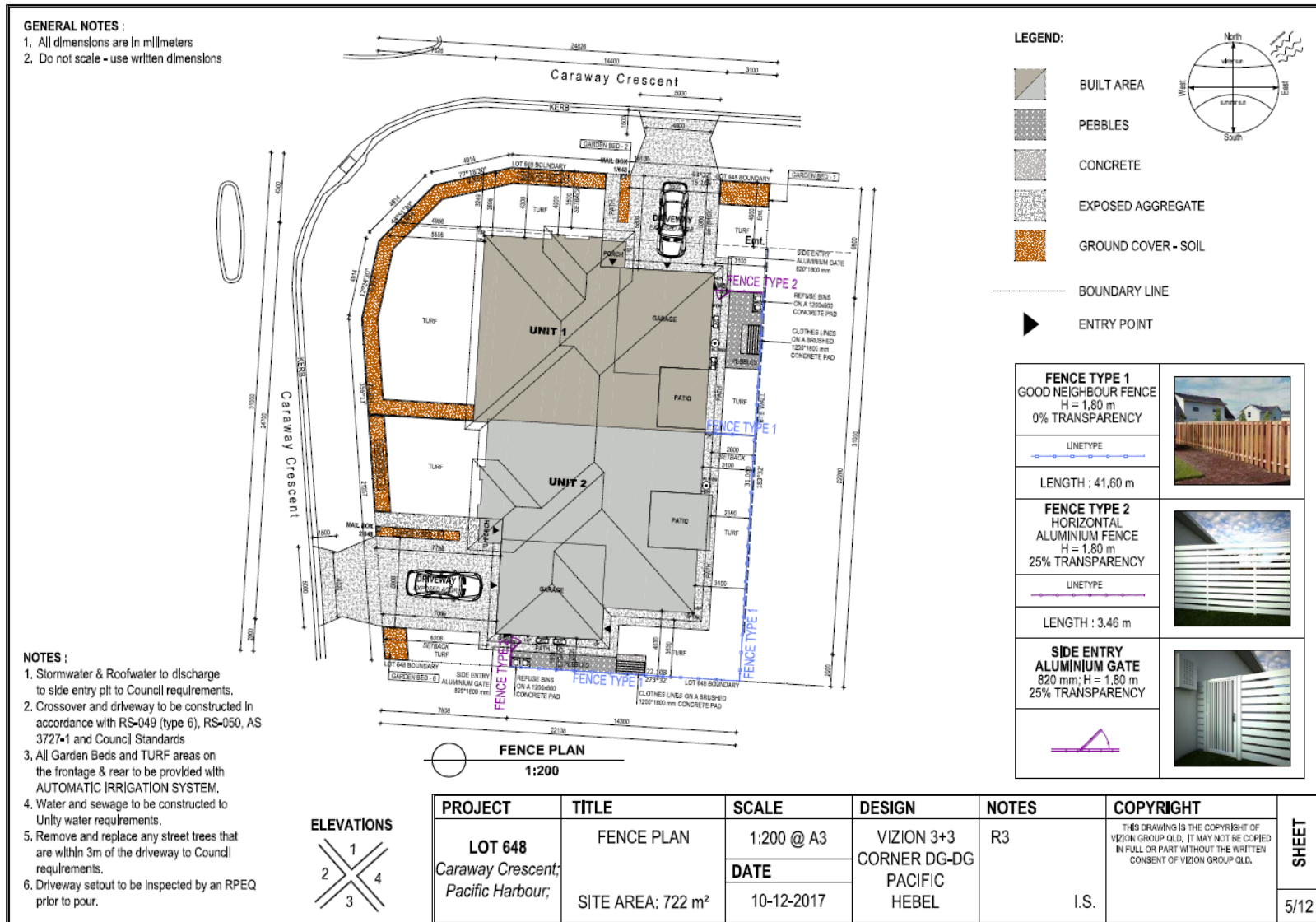
#3 Proposed Material Change of Use Plans



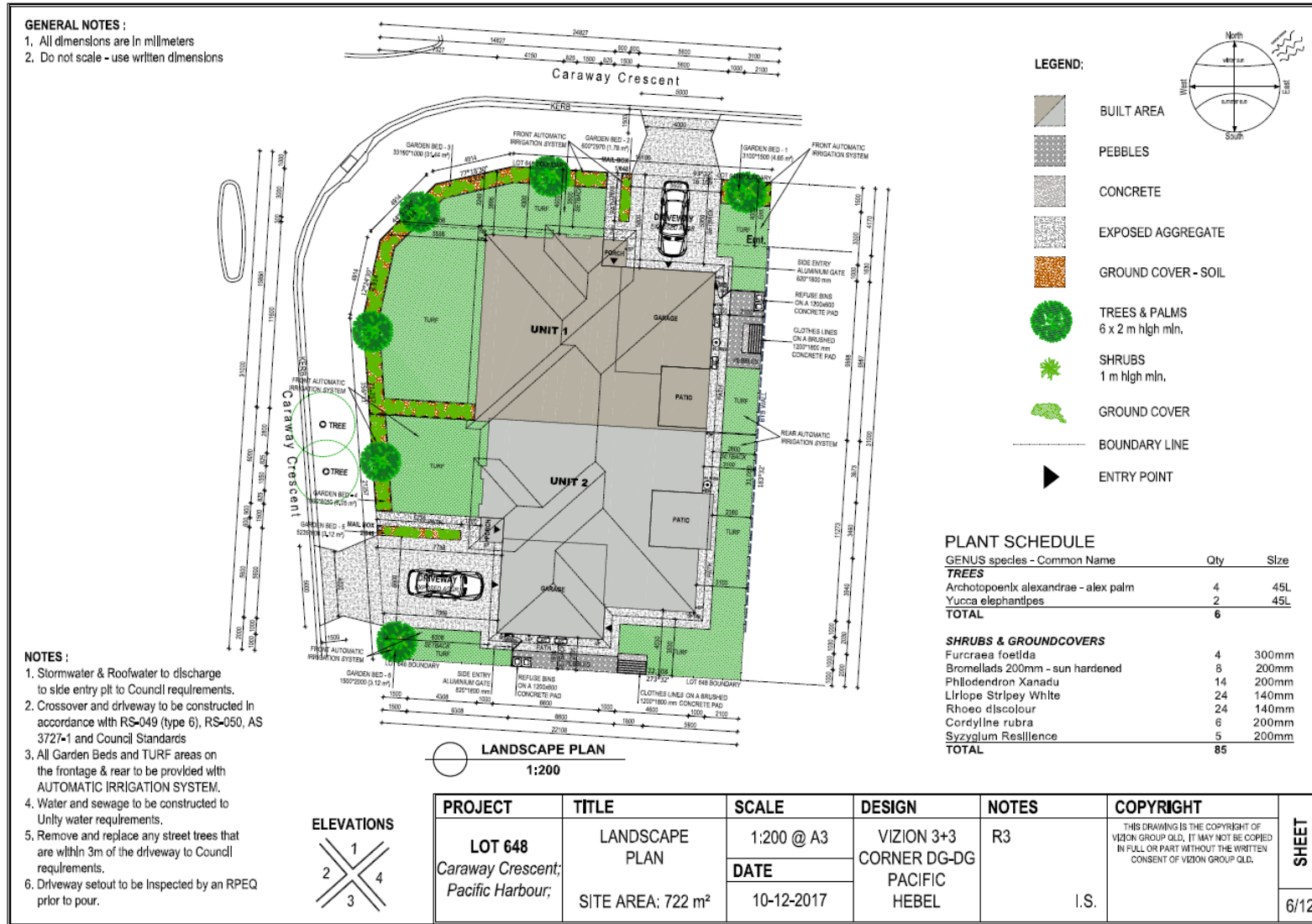
ITEM 2.3 DA/35501/2017/V2D - MATERIAL CHANGE OF USE - DEVELOPMENT PERMIT FOR DUAL OCCUPANCY - 22 CARAWAY CRESCENT, BANKSIA BEACH (LOT 648 SP291531) - DIVISION 1 (Cont.)



ITEM 2.3 DA/35501/2017/V2D - MATERIAL CHANGE OF USE - DEVELOPMENT PERMIT FOR DUAL OCCUPANCY - 22 CARAWAY CRESCENT, BANKSIA BEACH (LOT 648 SP291531) - DIVISION 1 (Cont.)



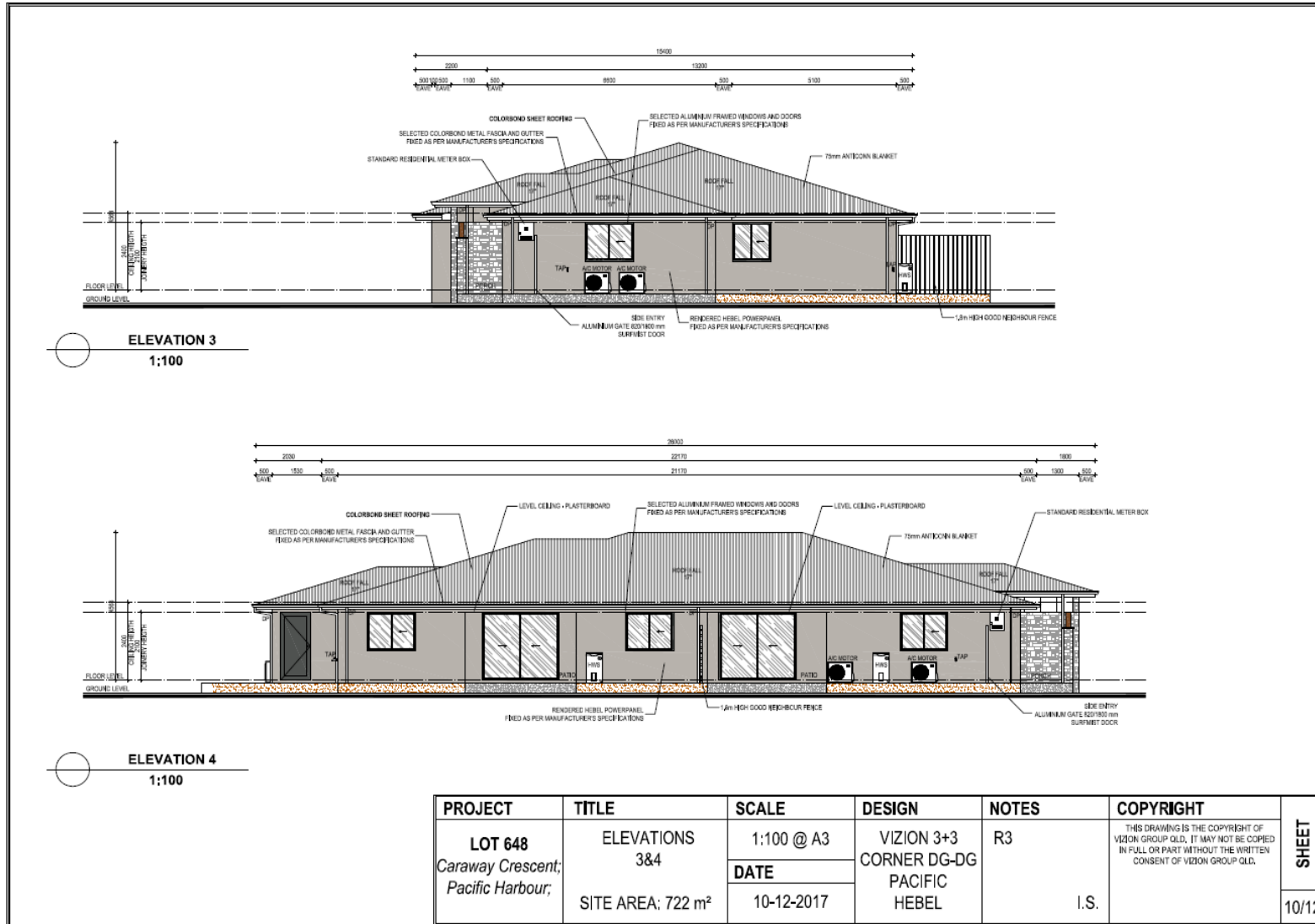
ITEM 2.3 DA/35501/2017/V2D - MATERIAL CHANGE OF USE - DEVELOPMENT PERMIT FOR DUAL OCCUPANCY - 22 CARAWAY CRESCENT, BANKSIA BEACH (LOT 648 SP291531) - DIVISION 1 (Cont.)



ITEM 2.3 DA/35501/2017/V2D - MATERIAL CHANGE OF USE - DEVELOPMENT PERMIT FOR DUAL OCCUPANCY - 22 CARAWAY CRESCENT, BANKSIA BEACH (LOT 648 SP291531) - DIVISION 1 (Cont.)

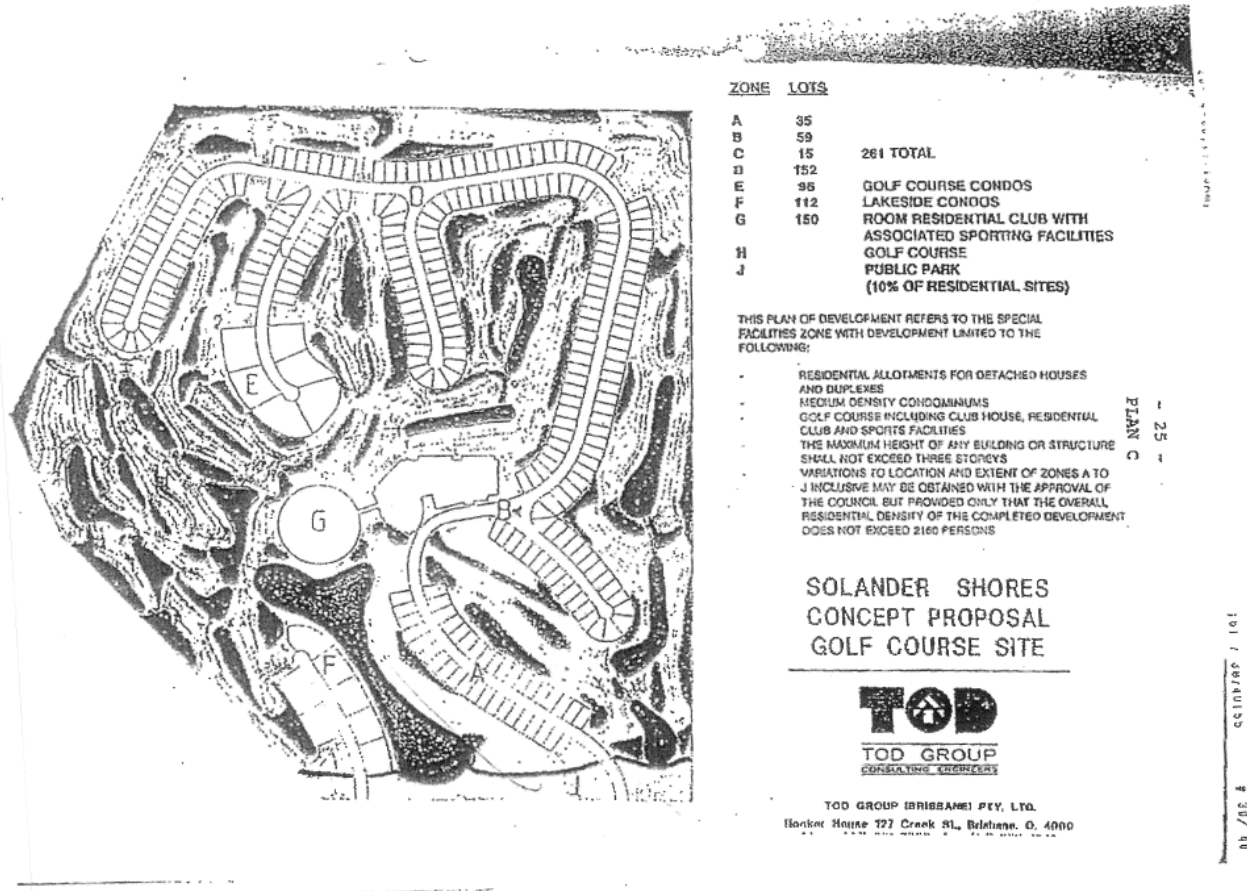


ITEM 2.3 DA/35501/2017/V2D - MATERIAL CHANGE OF USE - DEVELOPMENT PERMIT FOR DUAL OCCUPANCY - 22 CARAWAY CRESCENT, BANKSIA BEACH (LOT 648 SP291531) - DIVISION 1 (Cont.)



ITEM 2.3 DA/35501/2017/V2D - MATERIAL CHANGE OF USE - DEVELOPMENT PERMIT FOR DUAL OCCUPANCY - 22 CARAWAY CRESCENT, BANKSIA BEACH (LOT 648 SP291531) - DIVISION 1 (Cont.)

#4 Deed of Agreement Plan





## Moreton Bay Regional Council

COORDINATION COMMITTEE MEETING  
27 February 2018

PAGE 33  
Supporting Information

ITEM 2.3 DA/35501/2017/V2D - MATERIAL CHANGE OF USE - DEVELOPMENT PERMIT FOR DUAL OCCUPANCY  
- 22 CARAWAY CRESCENT, BANKSIA BEACH (LOT 648 SP291531) - DIVISION 1 (Cont.)

### #5 Submissions

**From:** Keith Hartmann  
**To:** [Tom Auckland](#)  
**Subject:** Re: Development Application Enquiry: 2017 / 35501 / V2D - MCU Dual Occupancy, Duplex  
**Date:** Monday, 5 February 2018 1:37:04 PM

---

To whom it may concern,

I Keith Hartmann and my wife Annemarie Elliott wish to raise concern in regards to our boundary fence that we will now be sharing with the proposed dual occupancy dwelling on lot: 648 street number [22 Caraway Crescent](#).

We would like to make note that our boundary fence was built in accordance with the Pacific Harbour covenant conditions, before lot 648 was changed to a duplex lot.

Our request is: Regardless of the structural orientation of the dwelling on lot 648, the existing boundary fence is to remain as it currently is. We will also be requesting 50% of the build cost of the fence that our lots: 647 & 648 share, from the owner of the lot 648.

Thank you for your time.

Kind Regards,

Keith Hartmann and Annemarie Elliott

20 Caraway Crescent,  
Banksia Beach,  
Bribie Island,  
Queensland,  
4507.

Keith Hartmann

**SUPPORTING INFORMATION**

**Ref: A16362401**

The following list of supporting information is provided for:

**ITEM 4.1**

**TENDER - NORTH LAKES ACTIVITY CENTRE SMART CAR PARKING TRIAL DESIGN, IMPLEMENT AND OPERATE - DIVISION 4**

***Confidential #1 Tender Evaluation***