

# Beachmere Footbridges Closure

## Factsheet

July 2024

OUR WELL-PLANNED PLACES

City of Moreton Bay has closed two footbridges at T.E. Bonney Reserve, Beachmere, for safety reasons. The footbridges are located at the southern end of Biggs Avenue (see enclosed map).

After seeking independent specialist advice, it has been decided that the footbridges should be removed and that it is not viable to replace them. They will remain closed while we consider options for removal.

We understand access to the foreshore, particularly at low tides, is popular with local dog owners. Access will still be available via the stairs at the carpark by the entry of the reserve.

## Why have the footbridges been closed?

Movement of the nearby sand dune and erosion of the bridge foundations during high tides and storms have exposed and damaged the rock and concrete supports of the footbridges.

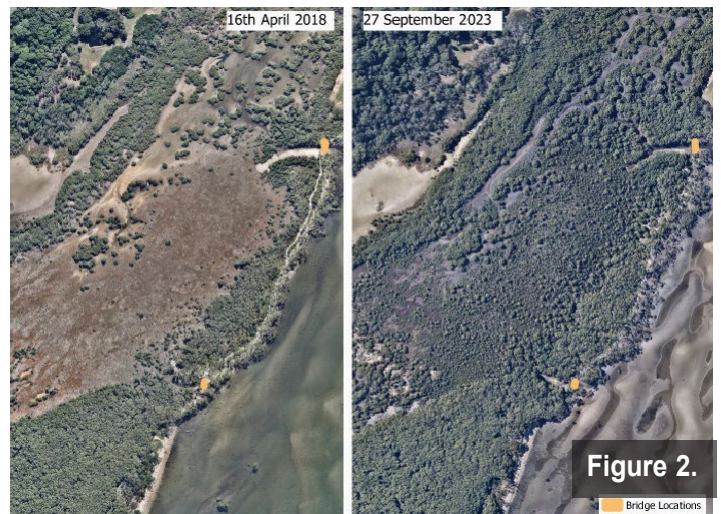


Figure 2.

Bridge Locations

The two tidal channels were constructed in 2018 to improve tidal flows to the extensive mangrove wetlands in the Reserve.

This has been very successful with substantial mangrove growth since they were established (see Figure 2).

The bridges were built to enable pedestrian access across the channels during higher tides. However, recent analysis shows the low barrier sand dune has been moving westward at a rate between 0.12 and 2.62 metres per year in the area (average approximately 1 metre a year for this 500m section of coast).



Figure 3.

This movement of the low barrier dune has slowly exposed the bridge and existing mature mangroves to more adverse tidal and wave conditions (see Figure 3).



For more information call (07) 3205 0555  
or email [council@moretonbay.qld.gov.au](mailto:council@moretonbay.qld.gov.au)