

Tilney Park Upgrade


Communication and Engagement Summary

June 2023





Acknowledgement



We acknowledge the Kabi Kabi, Jinibara and Turrbal Peoples as the Traditional Custodians of the lands and waterways of the Moreton Bay Region, and pay our respects to their Elders, past, present and emerging. We recognise that the Moreton Bay Region has always been a place of cultural, spiritual, social and economic significance to First Nations people.

We are committed to working in partnership with Traditional Custodians and other First Nations communities to shape a shared future that celebrates First Nations history and culture as an irreplaceable foundation of our region's collective identity.

Alignment with our roadmap

The Tilney Park Upgrade is helping to achieve the outcomes of our Corporate Plan 2022–2027 and realise our vision: **Our Moreton Bay. Amazing places. Natural spaces.**

The strategic pillar this project specifically relates to is:



By 2033, our Moreton Bay will be a network of well-planned and connected places and spaces, enhancing lifestyle, accessibility and employment choices.

Read more about Council's Corporate Plan and the pillars that underpin it at



mbrc.link/corporate-plan

Disclaimer

The Moreton Bay Regional Council and its officers accept no responsibility for any loss whatsoever arising howsoever from any person's act or omission in connection with any information, expressed or implied, contained within this document. Nothing in this document should be taken as legal advice.

Contents

Exciting new park elements	1
Engagement snapshot	1
How we engaged	2
What we heard	3
Next steps	5



Exciting new park elements

Council is enhancing the play and recreation facilities at Tilney Park to meet community demand and make it an even more amazing place for local families to visit and play.

Tilney Park is a much loved 10,000m² public space nestled amongst the trees near the centre of the Woodford township. The planned enhancements include expansion of the playground, the addition of BBQ facilities, shelters, gardens and shade as well as the installation of an all-ages pump track.

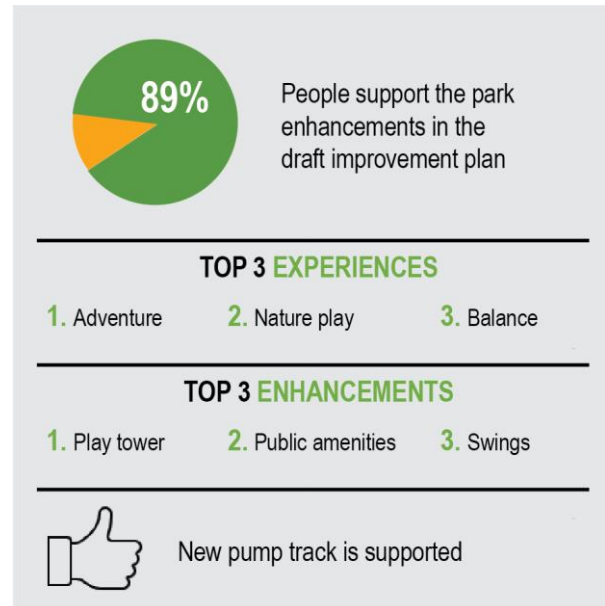
The planned enhancements will ultimately bring the park up to a “district level” standard that means public amenities will also be delivered for the convenience of park users.

To guide the enhancements, a high-level improvement plan was developed that could be delivered in stages pending funding availability. This plan was informed by detailed site analysis and consultation with expert park designers. Between 18 April and 16 May 2023, the plan was made available for public comment.

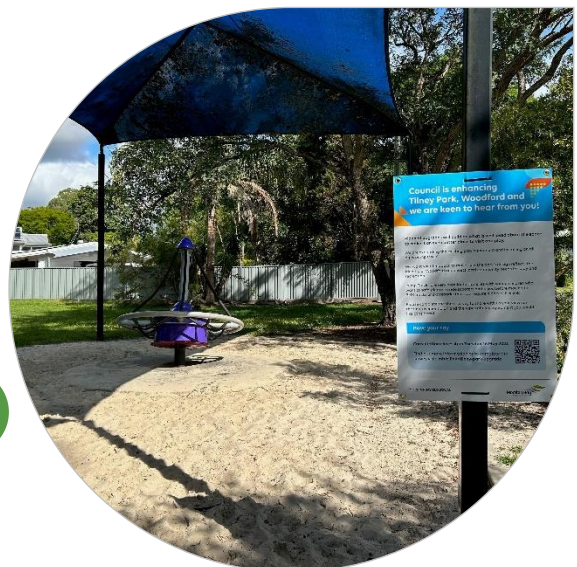
This report summarises the feedback received during the consultation period.

Engagement snapshot

Between 18 April and 16 May 2023, via 34 survey responses the community told us...



“Anyway, thanks for allowing some feedback... from a family who really appreciates the Tilney park green space.”
Survey respondent



How we engaged

The community was invited to provide feedback on the plan by completing an online survey on Council's Your Say Moreton Bay website.

To enable community members to provide informed feedback, a description of the planned upgrades and a copy of the improvement plan were also made available on the Your Say Moreton Bay page. The survey opened on 18 April 2023 and closed on 16 May 2023.

Eight survey questions collected qualitative and quantitative data so Council could better understand:

- community support for proposed enhancements

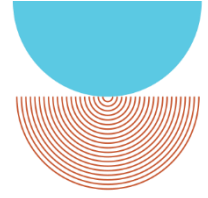
- community preferences for play experiences (e.g., adventure, balance, nature play, sensory play, discovery and education)
- community preferences for play elements (e.g., play tower, swings, spinning elements).

The survey also invited respondents to provide additional comments about the improvement plan. Participants were able to complete the survey anonymously.

The opportunity to provide feedback was promoted through geotargeted social media posts, a letterbox-drop to the 20 adjacent properties, temporary corflute signage in the park, posters in the local library and Council's Your Say Moreton Bay website and newsletter.



Figure 1. Extract from Park Improvement Plan for Tilney Park, Woodford used during consultation

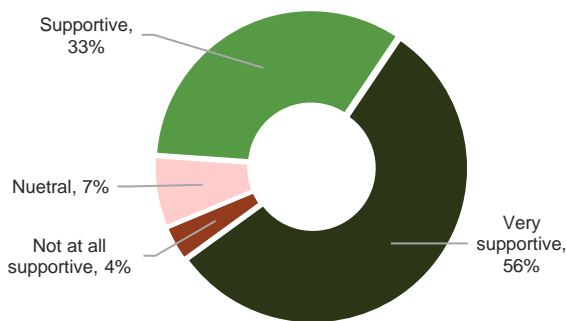


What we heard

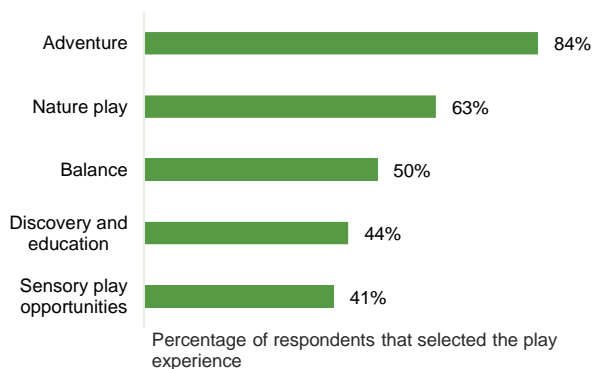
The survey received 34 responses during the four-week consultation period.

Respondents mainly resided in Woodford, D'Aguilar and Delaney's Creek. The geographic spread of respondents indicates Tilney Park services neighbouring areas as well as the immediate Woodford community.

When we asked how supportive the community was of the planned enhancements, we learned that 89% of respondents were either supportive or very supportive.

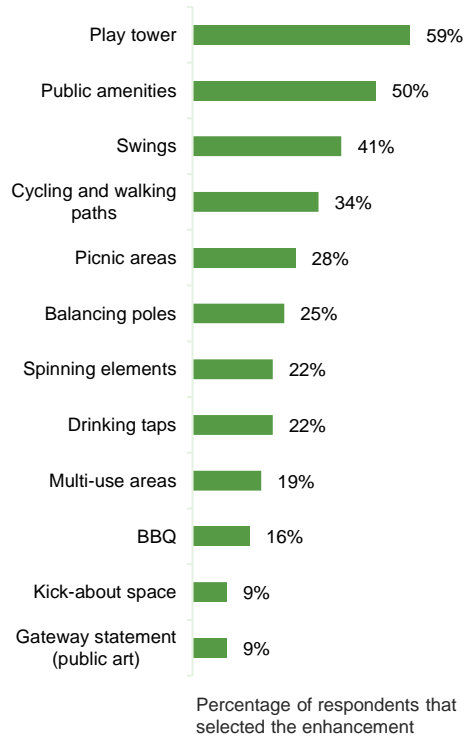


When we asked community members to select up to three play experiences from a list of five options, adventure, nature play and balance were the most popular.



“The park is a great place as it is now, but [I] understand the desire for improvements. These kinds of facilities are fantastic for local residents and drop ins”
 Survey respondent

From a list of 12 possible park enhancements, the community was asked to select their preferred three. Play tower, public amenities and swings were the top three selected.



Note: the public amenities option was added on day three of the survey period, correcting an oversight at the time of survey release. The percentage of respondents that selected public amenities presented here includes the number of respondents that requested in public amenities in the open text field before public amenities was available to select.



When we asked what was liked about the improvement plan, the following aspects were highlighted by respondents:

- mix of elements making up the park
- pump track
- nature play
- family-friendly focus catering for all ages including younger children
- retention of existing features
- buffer planting
- spaces to sit and eat.

“*The mix presented in the plan, ranging from sports areas, open space, riding areas and play space, appears well balanced.*

Survey respondent

“*I love the pump track, the nature play area and the general mix of facilities coming to the park. The Woodford area has desperately needed a good quality park for many years*

Survey respondent

“*[I like] that it's utilising the space in a way that's going to benefit the region, and that it's taking into account the high number of new young families in the region because of the new housing developments*

Survey respondent

“*The sooner the better*

Survey respondent



Finally, community members were invited to share any other comments they had. A summary of what respondents told us is below.

Currently valued aspects of the park:

- Peacefulness and beauty of the green space
- basketball key
- spinner play equipment.



Additional enhancement suggestions:

- barrier fencing between the park and the street and/or speed reductions on street
- safety matting under the play equipment
- flying fox
- some accessible play equipment, like in Sippy Park, Beerwah
- BBQs in the new picnic shelters
- formalisation of the car parking but done in a way that maintains accessibility and ability to “pull up under the shade of the trees”
- more planting of native vegetation to attract birds
- dog poo bag dispenser
- a sensory/community garden in the vicinity of the nature play area
- security measures such as cameras
- more shade over the existing playground
- expanded bike area with paths for teaching children to ride and the road rules, like the Morayfield Bike Park
- water play elements
- strategically located seating so parents can sit and monitor their children when they are using play areas, track and footpaths (seating could be as simple as sandstone blocks).

Concerns were raised about:

- management of antisocial behaviour including vandalism, littering and inappropriate language
- protection of the natural environment
- maintaining grassed areas for kick around and picnics
- motorhome campers staying at the park overnight (suggested that no camping signs could be installed).

“ We are aware of the environmental value of the park to native birds and would hate to see that lost.

Survey respondent

One respondent called for a focus on rejuvenating the existing play space and breathing life back into the area before delivering the pump track.

While support for the pump track was very high some respondents questioned the need for it when the Archer Street park could potentially be upgraded to serve the same purpose.



Next steps

Thank you to everyone who completed the survey and provided feedback on the draft improvement plan. Not all the suggestions put forward will be able to be implemented.

Council will consider your comments as the project progresses and as the detailed designs for each stage of the upgrade are developed.

We want to deliver an amazing park that is responsive to local needs, aspirations and ideas.

The first stage of the improvement plan, the new pump track, is expected to be delivered in 2024, pending any unforeseen circumstances. Other enhancements will be delivered through future stages as funding becomes available.





For more information on our new Corporate Plan and Pillars
scan the QR code or visit moretonbay.qld.gov.au